

TECHNICAL MANUAL
ORGANIZATIONAL, DIRECT SUPPORT, AND GENERAL SUPPORT MAINTENANCE
REPAIR PARTS AND SPECIAL TOOLS LISTS

FOR

CONTROL GROUP OK-258/TAQ-2
(NSN 6635-00-127-9569)

AND

GENERATOR GROUP OV-47/TAQ-2
(NSN 6635-00-127-9570)

HEADQUARTERS, DEPARTMENT OF THE ARMY

SEPTEMBER 1977

**ORGANIZATIONAL, DIRECT SUPPORT, AND GENERAL SUPPORT MAINTENANCE
REPAIR PARTS AND SPECIAL TOOLS LISTS**

**FOR
CONTROL GROUP OK-258/TAQ-2
(NSN 6635-00-127-9569)
AND
GENERATOR GROUP OV-47/TAQ-2
(NSN 6635-00-127-9570)**

Current as of 22 April 1977

REPORTING OF ERRORS

You can improve this manual by recommending improvements using DA Form 2028-2 (Test) located in the back of the manual. Simply tear out the self-addressed form, fill it out as shown on the sample, fold it where shown, and drop it in the mail.

If there are no blank DA Form 2028-2 (Test) in the back of your manual, use the standard DA Form 2028 (Recommended Changes to Publications and Blank Forms) and forward to the Commander, US Army Electronics Command, ATTN: DRSEL-MA-Q, Fort Monmouth, NJ 07703.

In either case a reply will be furnished direct to you.

Table of Contents

	Page	Illus Figure
SECTION I. Introduction	1	
II. Repair parts list	5	
Group 00 Control Group OK-258/TAQ-2, Generator Group OV-47/TAQ-2	5	1
01 Control Group OK-258/TAQ-2	7	2
0101 Control unit	9	3, 4
010101 Power supply, low voltage	19	5, 6
010102 Totalizer CT101 (No parts authorized)		
010103 Exposure selector CT102 (No parts authorized)		
010104 Circuit board 521	23	7
010105 Circuit board 522.	25	8
0102 X-ray tube (No parts authorized)		
02 Generator Group OV-471TAQ-2	27	9-11
0201 Pulser unit	33	12
0202 High voltage power supply (No parts authorized)		
0203 Pressure system	35	13
03 Accessories, cable	37	14, 15
SECTION III. Special tools list (Not applicable)		
IV. National stock number and part number index	40	

*This manual supersedes TM 11-6525-201-2P, 23 April 1974, including Change 1, 17 December 1975.

SECTION I

INTRODUCTION

1. Scope

This manual lists spares and repair parts; special tools; special test, measurement, and diagnostic equipment (TMDE), and other special support equipment required for performance of organizational, direct support, and general support maintenance of the OK-258/TAQ-2, OV-47/TAQ-2. It authorizes the requisitioning and issue of spares and repair parts as indicated by the source and maintenance codes.

2. General

This Repair Parts and Special Tools List is divided into the following sections:

a. *Section II. Repair Parts List.* A list of spares and repair parts authorized for use in the performance of maintenance. The list also includes parts which must be removed for replacement of the authorized parts. Parts lists are composed of functional groups in numeric sequence, with the parts in each group listed in figure and item number sequence.

b. *Section III. Special Tools List.* Not applicable.

c. *Section IV. National Stock Number and Part Number Index.* A list, in National item identification number (NIIN) sequence, of all National stock numbers (NSN) appearing in the listings, followed by a list, in alphameric sequence, of all part numbers appearing in the listings. National stock numbers and part numbers are cross-referenced to each illustration figure and item number appearance.

3. Explanation of Columns

a. *Illustration.* This column is divided as follows:

(1) *Figure number.* Indicates the figure number of the illustration on which the item is shown.

(2) *Item number.* The number used to identify item called out in the illustration.

b. *Source, Maintenance, and Recoverability (SMR) Codes.*

(1) *Source code.* Source codes indicate the manner of acquiring support items for maintenance, repair, or overhaul of end items. Source codes are entered in the first and second positions of the Uniform SMR Code format as follows:

<i>Code</i>	<i>Definition</i>
PA-	Item procured and stocked for anticipated or known usage.
XD-	A support item that is not stocked. When required, item will be procured through normal supply channels.

NOTE

Cannibalization or salvage may be used as a source of supply for any items source coded above except those coded XA and aircraft support items as restricted by AR 700-42.

(2) *Maintenance code.* Maintenance codes are assigned to indicate the levels of maintenance authorized to USE and REPAIR support items. The maintenance codes are entered in the third and fourth positions of the Uniform SMR Code format as follows:

(a) The maintenance code entered in the third position will indicate the lowest maintenance level authorized to remove, replace, and use the support item. The maintenance code entered in the third position will indicate one of the following levels of maintenance:

<i>Code</i>	<i>Application/Explanation</i>
C-	Crew or operator maintenance performed within organizational maintenance.
O-	Support item is removed, replaced, used at the organizational level.
F-	Support item is removed, replaced, used at the direct support level.
H-	Support item is removed, replaced, used at the general support level.

(b) The maintenance code entered in the fourth position indicates whether the item is to be repaired and identifies the lowest maintenance level with the capability to perform complete repair (i.e., all authorized maintenance functions). This position will contain one of the following maintenance codes:

<i>Code</i>	<i>Application/Explanation</i>
F-	The lowest maintenance level capable of complete repair of the support item is the direct support level.
H-	The lowest maintenance level capable of complete repair of the support item is the general support level.
Z-	Nonreparable. No repair is authorized.

(3) *Recoverability code.* Recoverability codes are assigned to support items to indicate the disposition action on unserviceable items. The recoverability code is entered in the fifth position of the Uniform SMR Code format as follows:

<i>Recoverability codes</i>	<i>Definition</i>
Z-	Nonreparable item. When unserviceable, condemn and dispose at the level indicated in position 3.
F-	Reparable item. When uneconomically repairable,

Recoverability codes

Definition

condemn and dispose at the direct support level.

H- **Reparable item.** When uneconomically reparable, condemn and dispose at the general support level.

c. **National Stock Number.** Indicates the National stock number assigned to the item and will be used for requisitioning purposes.

d. **Part Number.** Indicates the primary number used by the manufacturer (individual, company, firm, corporation, or Government activity), which controls the design and characteristics of the item by means of its engineering drawings, specifications, standards, and inspection requirements to identify an item or range of items.

NOTE

When a stock numbered item is requisitioned, the repair part received may have a different part number than the part being replaced.

e. **Federal Supply Code for Manufacturer (FSCM).** The FSCM is a 5-digit numeric code listed in SB 708-42 which is used to identify the manufacturer, distributor, or Government agency, etc.

f. **Description.** Indicates the Federal item name and, if required, a minimum description to identify the item.

g. **Unit of Measure (U/M).** Indicates the standard of the basic quantity of the listed item as used in performing the actual maintenance function. This measure is expressed by a two-character alphabetical abbreviation (e.g., ea, in, pr, etc). When the unit of measure differs from the unit of issue, the lowest unit of issue that will satisfy the required units of measure will be requisitioned.

h. **Quantity Incorporated in Unit.** Indicates the quantity of the item used in the breakout shown on the illustration figure, which is prepared for a functional

group, subfunctional group, or an assembly.

4. Special Information

The following publication pertains to the OK-258/TAQ-2 and OV-47/TAQ-2 and its components:

TM 11-6525-201-14, Control Group OK-258/TAQ-2 and Generator Group OV-47/TAQ-2

5. How to Locate Repair Parts

a. When National stock number or part number is unknown.

(1) *First.* Using the table of contents, determine the functional group within which the item belongs. This is necessary since illustrations are prepared for functional groups and listings are divided into the same groups.

(2) *Second.* Find the illustration covering the functional group to which the item belongs.

(3) *Third.* Identify the item on the illustration and note the illustration figure and item number of the item.

(4) *Fourth.* Using the Repair Parts Listing, find the figure and item number noted on the illustration.

b. When National stock number or part number is known.

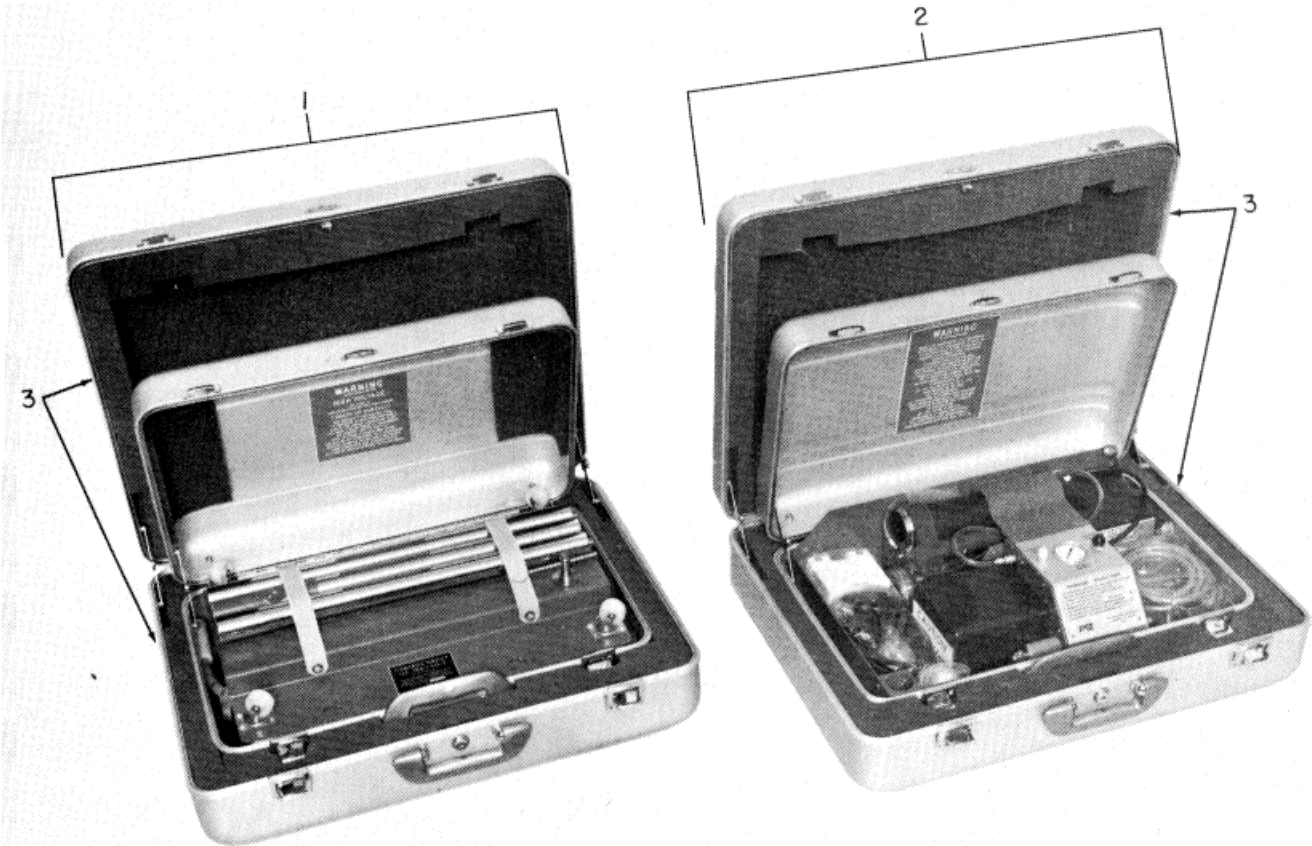
(1) *First.* Using the Index of National Stock Numbers and Part Numbers, find the pertinent National stock number or part number. This index is in NIIN sequence followed by a list of part numbers in alphameric sequence, cross-referenced to the illustration figure number and item number.

(2) *Second.* After finding the figure and item number, locate the figure and item number in the repair parts list.

6. Abbreviations

Not applicable.

(Next printed page is 4.)



ELIFZ001

Figure 1. Control Group OK-258/TAQ-2 and Generator Group OV-47/TAQ-2.

SECTION II

TM 11-6525-201-24P

(1) ILLUSTRATION		(2)	(3)	(4)	(5)	(6) DESCRIPTION	(7)	(8)
(a) FIG NO.	(b) ITEM NO.	SMR CODE	NATIONAL STOCK NUMBER	PART NUMBER	FSCM	USABLE ON CODE	U/M	QTY INC IN UNIT
1	1	PAFHH	6635-00-127-9570	OV-47/TAO-2	80058	GROUP 00 CONTROL GROUP OK-258/TAQ-2 AND GENERATOR GROUP OV-47/TAQ-2		
1	2	PAFT4	6635-00-127-9569	OK-258/TAQ-2	80058	GENERATOR GROUP	EA	1
1	3	XDFHH		26016	98376	CONTROL GROUP CASE, CARRYING OUTER	EA	1 2
					5			

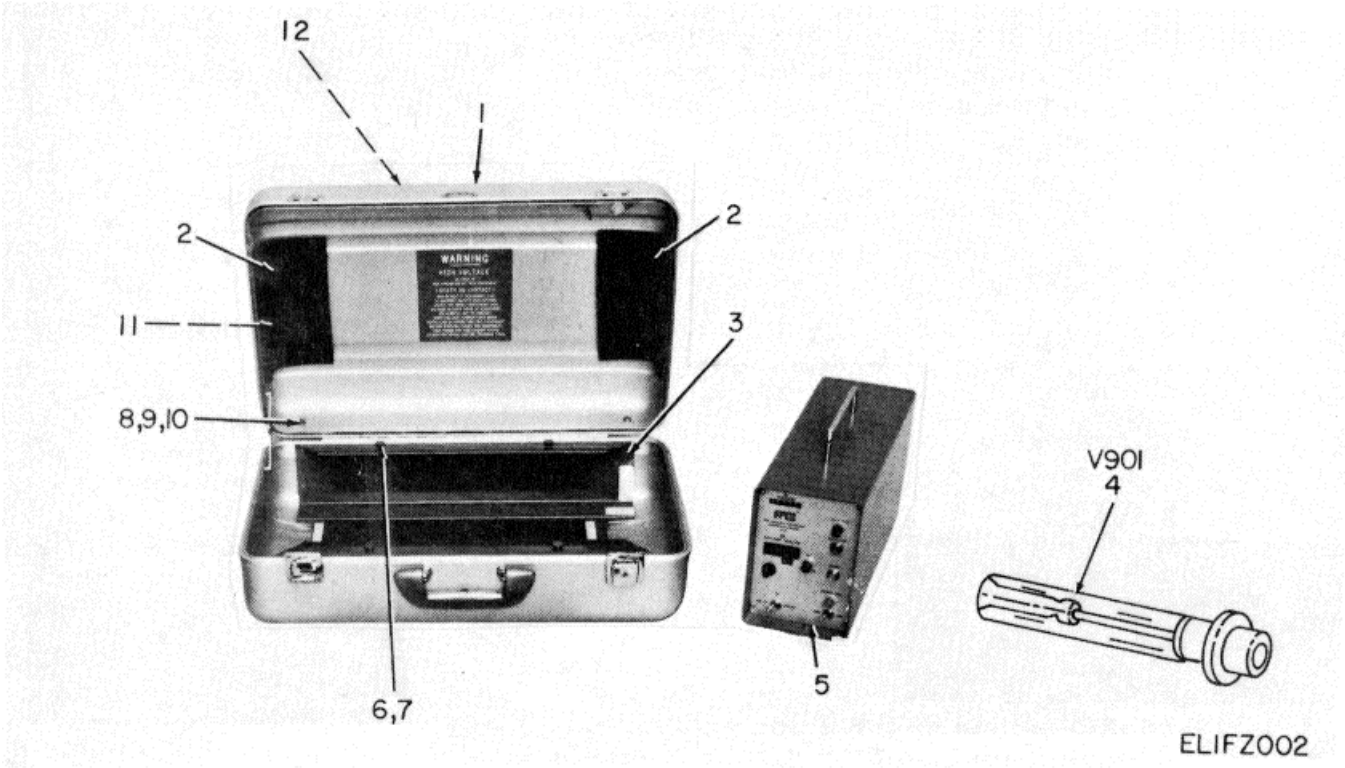


Figure 2. Control Group OK-258/TAQ-2.

SECTION II

TM 11-6525-201-24P

(1) ILLUSTRATION		(2)	(3)	(4)	(5)	(6) DESCRIPTION	(7)	(8)
(a) FIG NO.	(b) ITEM NO.	SMR CODE	NATIONAL STOCK NUMBER	PART NUMBER	FSCM	USABLE ON CODE	U/M	QTY INC IN UNIT
						GROUP 01 CONIROL GROUP OK-258/TAQ-2		
2	1	XOHZZ		120-846611	14488	CASE ASSEMBLY.INNER	EA	1
2	2	XDHZZ		100-846641	14488	FOAM PAD	EA	2
2	3	XDHZZ		100-846318	14488	LINER, CASE	EA	1
2	4	XDCZZ		140-533000	14488	TUBE, X-RAY	EA	1
2	5	XDFHH		120-846322	14488	CONTROL UNIT ASSEMBLY	EA	1
2	6	XDHZZ		1264A	71218	FOOT, RUBSER	EA	4
2	7	PAHZZ	5305-00-059-3662	MS51958-66	96906	SCREW, MACHINE, PAN HEAD	EA	4
2	8	XDHZZ		MS35650-104	96906	NUT, HEXAGON	EA	2
2	9	PAHZZ	5310-00-543-5933	MS35333-73	96906	WASHER, LOCK	EA	2
2	10	PAHZZ	5305-00-059-3660	MS51958-64	96906	SCRE, MACHTNE, PAN HEAD	EA	2
2	11	XDHZZ		100-846363	14488	WEAR STRIP	EA	2
2	12	XDHZZ		100-846343	14488	NAMEPLATE	EA	1
					7			

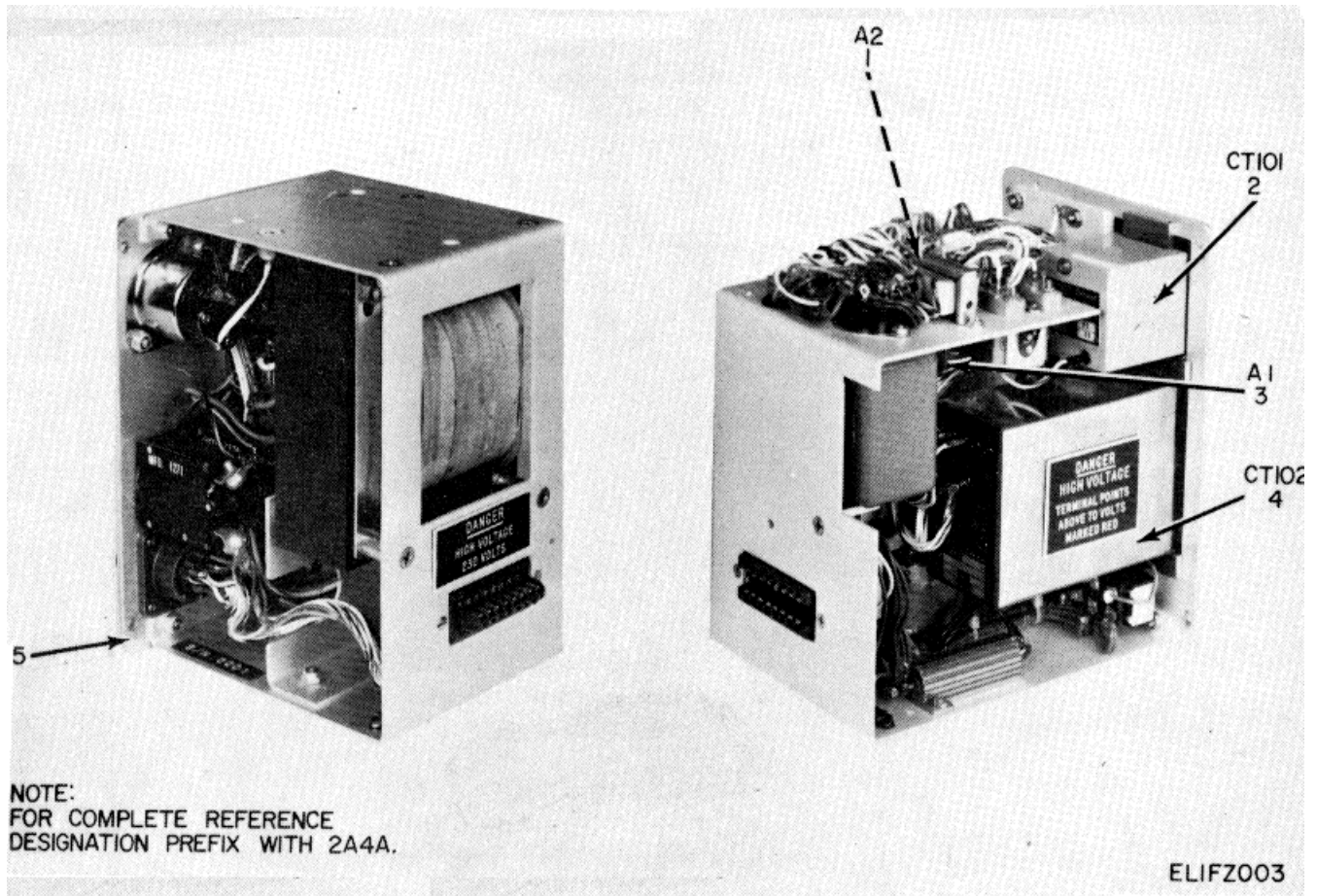


Figure 3. Control Unit.

SECTION II

TM 11-6525-201-24P

(1) ILLUSTRATION		(2)	(3)	(4)	(5)	(6)	(7)	(8)
(a) FIG NO.	(b) ITEM NO.	SMR CODE	NATIONAL STOCK NUMBER	PART NUMBER	FSCM	DESCRIPTION USABLE ON CODE	U/M	QTY INC IN UNIT
						GROUP 0101 CONTROL UNIT		
3	1	PAOFF	6635-00-092-4363	120-846522	1488	CIRCUIT BOARD ASSEMBLY, CONTROL	EA	1
3	2	XDFZZ		760-000186	1488	TOTALIZER	EA	1
3	3	PAOFF	6635-00-092-4362	120-846521	14488	CIRCUIT BOARD ASSEMBLY, TRIPOUT	EA	1
3	4	PAFZZ	6680-00-099-5840	100-16210	52620	EXPOSURE SELECTOR	EA	1
3	5	XDFHH		120-846327	14488	POYER SUPPLY, LOW VOLTAGE	EA	1

9/(10 blank)

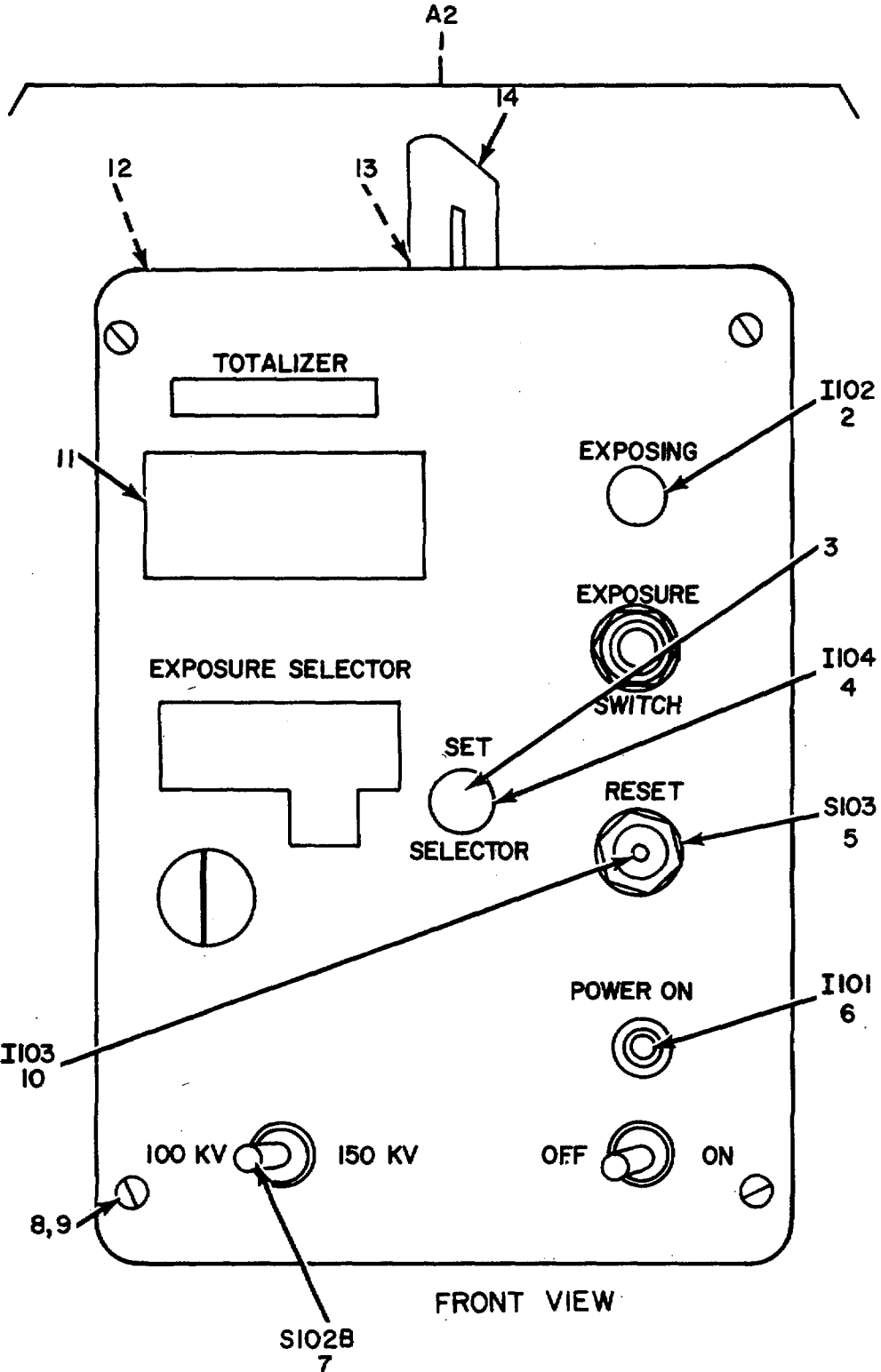


Figure 4. Control Unit (Sheet 1 of 4).

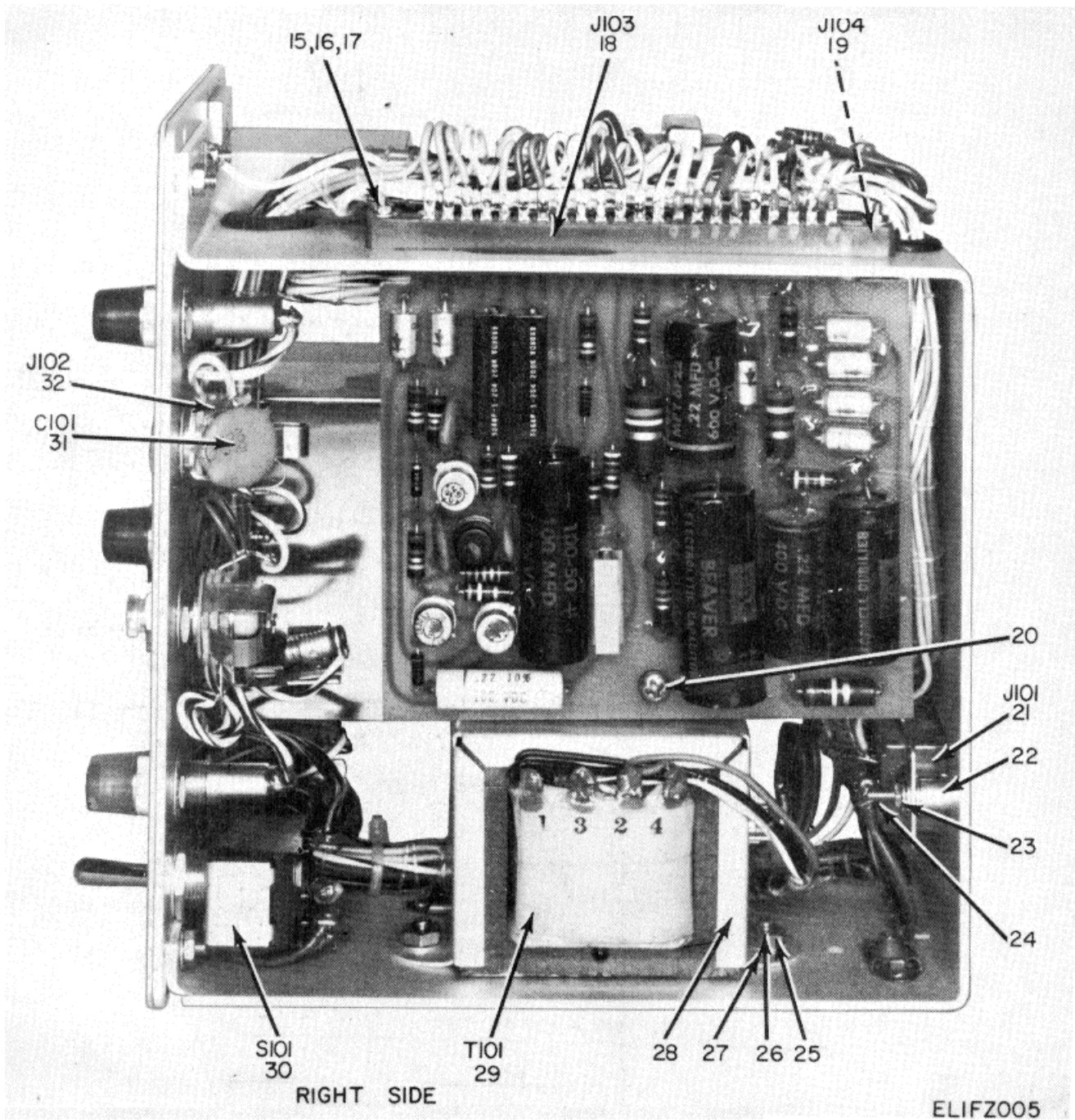


Figure 4. Control Unit (Sheet 2 of 4).

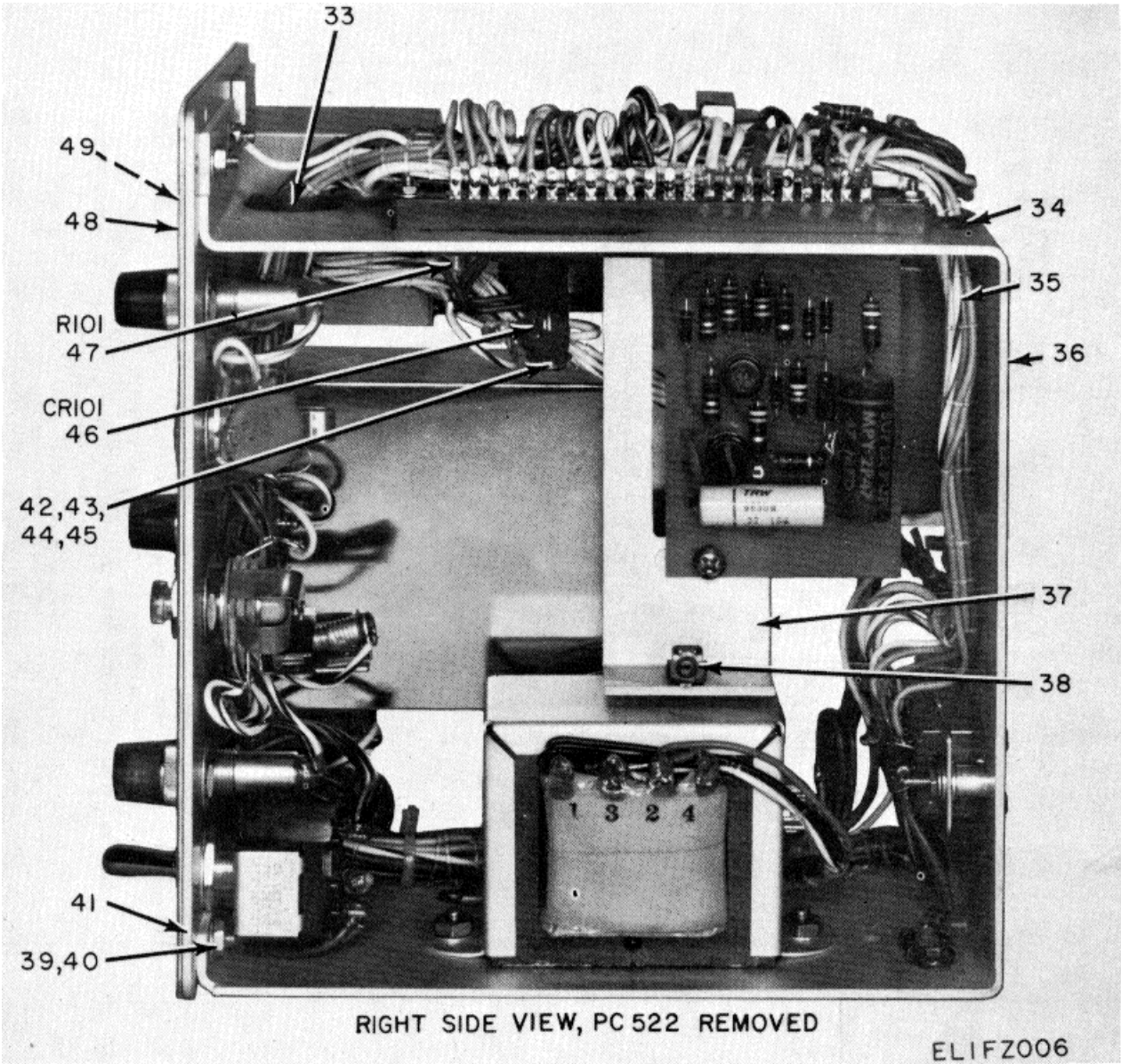


Figure 4. Control Unit (Sheet 3 of 4).

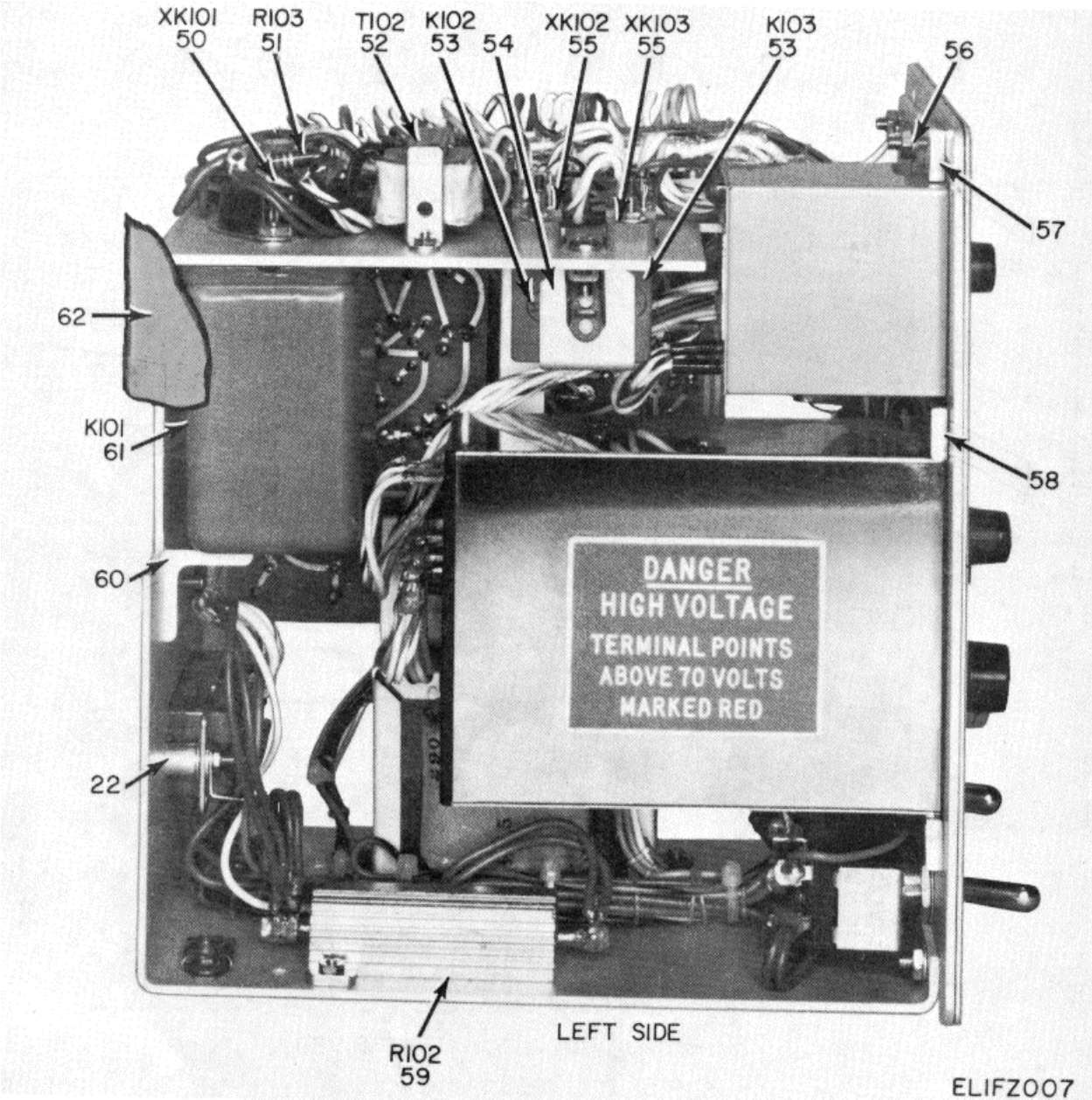


Figure 4. Control Unit (Sheet 4 of 4).

SECTION II

TM 11-6525-201-24P

(1) ILLUSTRATION		(2)	(3)	(4)	(5)	(6)	(7)	(8)
(a) FIG NO.	(b) ITEM NO.	SMR CODE	NATIONAL STOCK NUMBER	PART NUMBER	FSCM	DESCRIPTION USABLE ON CODE	U/M	QTY INC IN UNIT
4	1	XDHHH		120-846326	14488	CONTROL SECTION SUBASSEMBLY	EA	1
4	2	XDOZZ		857-R-NE2-100K	08717	LIGHT, PANEL, RED	EA	1
4	3	PAHZZ	6210-00-245-7525	856SG-M	08717	LIGHT.PANEL, GREEN	EA	1
4	4	PAOZZ	6240-00-155-7836	327	08806	LAMP	EA	1
4	5	PAHZZ	5930-00-220-6850	212S	82389	SWITCH, PUSH BUTTON	EA	1
4	6	XDOZZ		857-A-NE2-100K	08717	LIGHT, PANEL, AMBER	EA	1
4	7	PAHZZ	5930-00-655-1582	5S35059-23	96906	SWITCH, TOGGLE	EA	8
4	8	XDHZZ		MS35216-27	96906	SCREW.MACHINE, PAN HEAD	EA	8
4	9	PAHZZ	5310-00-218-6445	706-2162	01364	WASHER, FIBER	EA	8
4	10	XDOZZ		TYPE335	71744	LAMP, RESET SWITCH	EA	1
4	11	XDHZZ		100-846637	14488	NAMEPLATE	EA	1
4	12	XDHZZ	5305-00-054-5642	MS51957-8	96906	SCREW, MACHINE, FLAT HEAD	EA	9
4	13	PAHZZ	5305-00-071-1322	MS51960-65	96906	SCREW.MACHINE, FLAT HEAD	EA	2
4	14	XDHZZ		807	05704	HANDLE	EA	1
4	15	PAHZZ	5310-00-934-9748	MS35649-244	96906	NUT, HEXAGON	EA	14
4	16	XDHZZ		MS35216-8	96906	SCREW, MACHINE, PAN HEAD	EA	16
4	17	PAHZZ	5305-00-054-5651	MS51957-16	96906	SCREW, MACHINE, BINDING HEAD	EA	8
4	18	PAHZZ	5935-00-118-8221	250-10-30-170	71785	SOCKET, PRINTED CIRCUIT	EA	1
4	19	PAHZZ	5935-00-917-3453	250-22-30-170	71785	SOCKET, PRINTED CIRCUIT	EA	8
4	20	PAHZZ	5305-00-054-6650	MS51957-26	96906	SCREW, MACHINE, BINDING HEAD	EA	4
4	21	PAHZZ	5935-00-258-5811	26-4100-16P	74868	CONNECTOR	EA	1
4	22	XDHZZ		8706	83330	STANDOFF	EA	2
4	23	XDHZZ		505-120	79963	LUG, SOLDER	EA	3
4	24	PAHZZ	5305-00-770-2579	MS35200-15	96906	SCREW, MACHINE, FLAT HEAD	EA	2
4	25	PAHZZ	5310-00-934-9759	MS35649-284	96906	NUT, HEXAGON	EA	2
4	26	PAHZZ	5305-00-765-4257	MS51959-43	96906	SCREW, MACHINE, FLAT HEAD	EA	2
4	27	PAHZZ	5310-00-543-2739	MS35333-72	96906	WASHERLDCK, INTERNAL	EA	2
4	28	XDHZZ		100-846520	14488	TRANSFORMER STRAP	EA	1
4	29	PAHZZ	5950-00-222-7688	100-427909	52620	TRANSFORMER	EA	1
4	30	XDHZZ		2GK54-73	73559	SWITCH, TOGGLE	EA	1
4	31	PAHZZ	5910-00-894-7163	TG-P10	56289	CAPACITOR	EA	1
4	32	PAHZZ	5935-00-6B3-2746	JJ044	81349	JACK, PHONE	EA	1
4	33	PAHZZ	5325-00-224-1277	760-000205	52620	GROMMET, VINYL	EA	1
4	34	XDHZZ		760-000204	14488	GROMMET, VINYL	EA	1
4	35	XDHZZ		100-846516	14488	HARNES, CABLE	EA	1
4	36	XDHZZ		120-846339	14488	CHASSIS ASSEMBLYCONTROL	EA	1
4	37	XDHZZ		100-846519	14488	HOLDER, CIRCUIT BOARD	EA	1
4	38	XDHZZ		MS35216-12	96906	SCREW, MACHINE, BINDING HEAD	EA	4
4	39	XDHZZ		MS35200-25	96906	SCREW	EA	4
4	40	PAHZZ	5310-00-081-8087	MS21044N06	96906	LOCK NUT	EA	4

SECTION II

TM 11-6525-201-24P

(1) ILLUSTRATION		(2)	(3)	(4)	(5)	(6) DESCRIPTION	(7)	(8)
(a) FIG NO.	(b) ITEM NO.	SMR CODE	NATIONAL STOCK NUMBER	PART NUMBER	FSCM	USABLE ON CODE	U/M	QTY INC IN UNIT
4	41	XDHZZ		100-846396	14488	SUBPANEL	EA	1
4	42	PAHZZ	5310-00-934-9761	MS35649-264	96906	NUT, HEXAGON	EA	2
4	43	XDHZZ	5310-00-616-3555	MS35333-71	96906	WASHER, LOCK	EA	3
4	44	XDHZZ		250-00005	14488	HASHER, FIBER	EA	2
4	45	XDHZZ		MS35216-33	96906	SCREIW, MACHINE, RUND HEAD	EA	1
4	46	PAHZZ	5961-00-899-9347	1N2988A	04713	SEMICONDUCTOR OEVICE, ZENER DIODE	EA	1
4	47	PAHZZ	5905-00-197-0399	VPR-5-F	12697	RESISTOR, WIRE WOUND	EA	1
4	48	XDHZZ		100-846397	14488	OVERLAY.PANEL	EA	1
4	49	XDHZZ	5305-00-763-7822	MS51959-14	96906	SCREW, MACHINE, FLAT HEAD	EA	2
4	50	PAHZZ	5935-00-163-0004	88-8	74868	SOCKET, OCTAL	EA	1
4	51	XDHZZ		744002004	14488	RESISTOR	EA	1
4	52	PAHZZ	5920-00-220-6700	100-846524	14488	TRANSFORMER, CURRENT SAMPLING	EA	1
4	53	PAHZZ	5945-00-220-6701	773-000123	14488	RELAY	EA	2
4	54	XDHZZ		120-846390	14488	BRACKET ASSEMBLY, RELAY	EA	1
4	55	XDHZZ		RLA8S-2	81312	SOCKET, RELAY	EA	2
4	56	PAHZZ	5305-00-227-1633	220-000037	52620	SCREN.MACHINE, OVAL HEAD	EA	3
4	57	XDHZZ		100-846395	14488	CLAMP, COUNTER, SMALL	EA	2
4	58	XDHZZ		100-8946394	14488	CLAMP, COUNTER, LARGE	EA	1
4	59	PAHZZ	5905-00-295-4083	RH50	91637	RESISTOR	EA	1
4	60	XDHZZ		100-846510	14488	BRACKET, RELAY, LARGE	EA	1
4	61	XDHZZ		88ADHPX-1	94694	RELAY	EA	1
4	62	XDHZZ		120-846328	14488	CASE ASSEMBLY	EA	1

16/(17 blank)

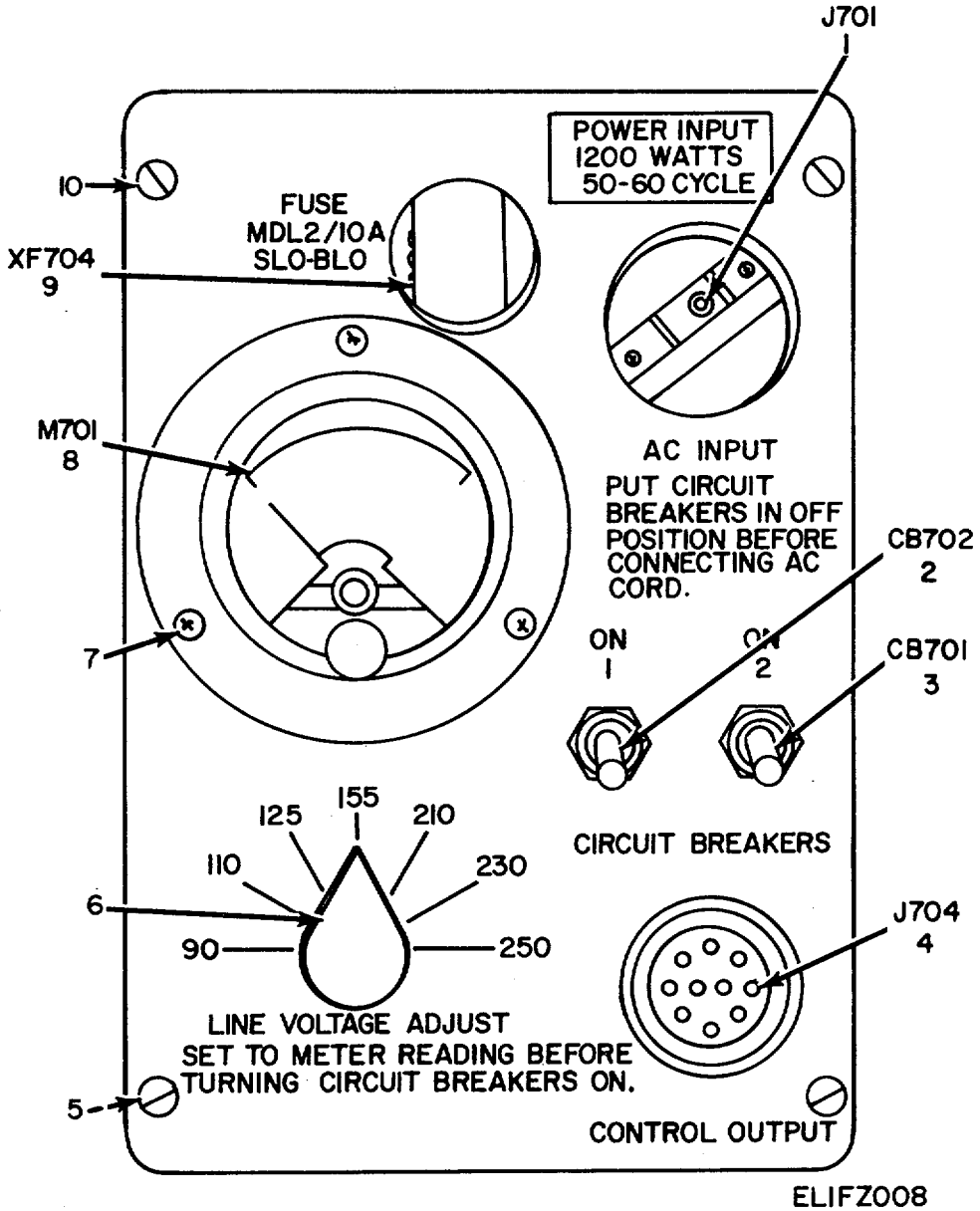
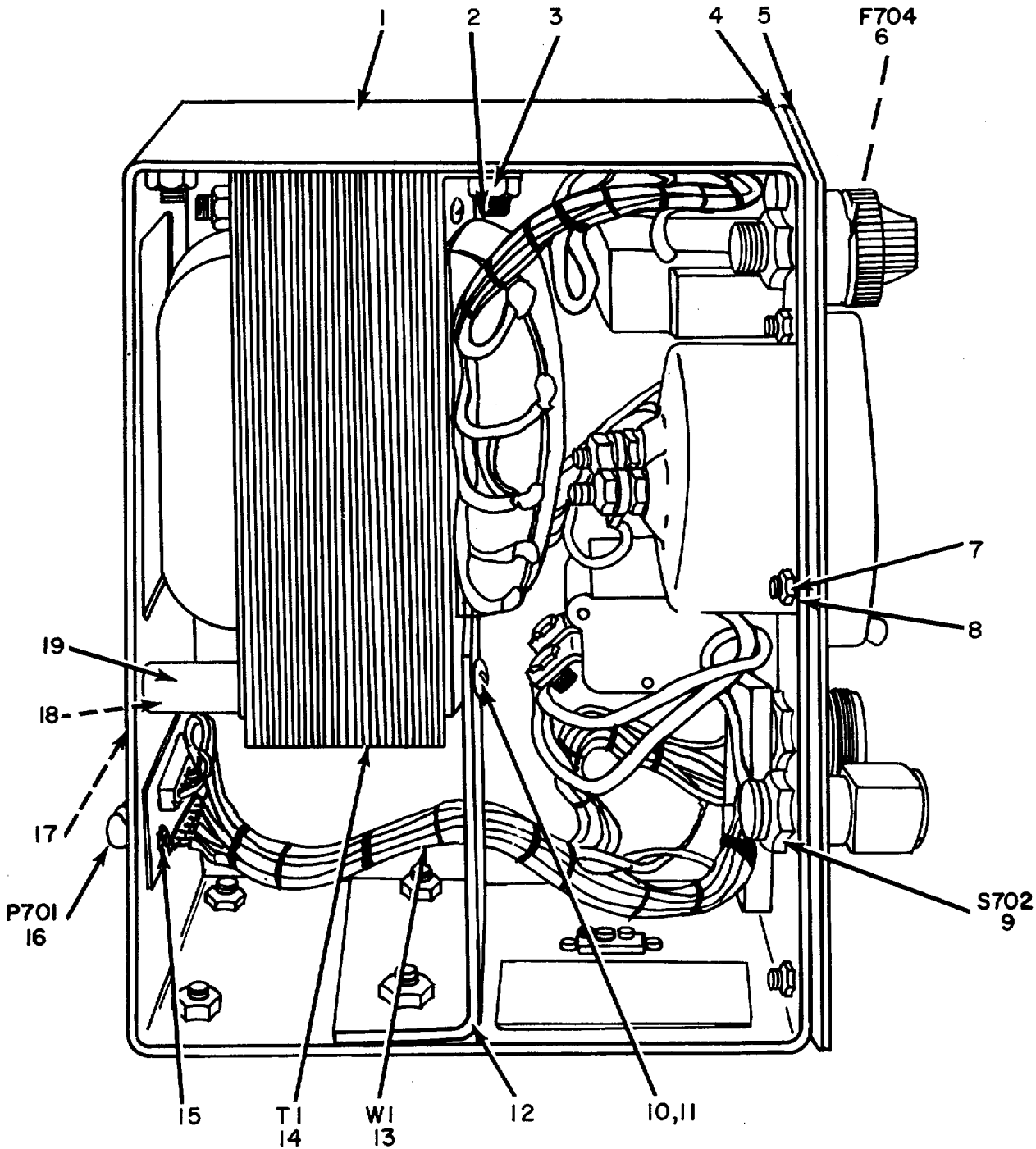


Figure 5. Power Supply, Low Voltage.

SECTION II

TM 11-6525-201-24P

(1) ILLUSTRATION		(2)	(3)	(4)	(5)	(6) DESCRIPTION	(7)	(8)
(a) FIG NO.	(b) ITEM NO.	SMR CODE	NATIONAL STOCK NUMBER	PART NUMBER	FSCM	USABLE ON CODE	U/M	QTY INC IN UNIT
						GROUP 010101 POWER SUPPLY, LOW VOLTAGE		
5	1	PAHZZ	5935-00-078-1707	5240	74545	CONNECTOR, RFCEPTACLE, ELECTRICAL	EA	1
5	2	XDHZZ		1125AMP	79405	CIRCUIT BREAKER	EA	1
5	3	XDHZZ		11210AMP	79405	CIRCUIT BREAKER	EA	1
5	4	XDHZZ		100-846639	14488	CONNECTOR, RECEPTACLE, ELECTRICAL	EA	1
5	5	PAHZZ	5310-00-081-8087	MS21044N06	96906	NUT, LOCK	EA	8
5	6	XDOZZ		70-5-26	49956	KNOB	EA	1
5	7	PAHZZ	5305-00-054-5653	MS51957-19	96906	SCRFW, MACHINE, PAN HEAD	EA	3
5	8	XDHZZ		760-002001	52620	METER	EA	1
5	9	PAHZZ	5920-00-818-1592	344250	75915	FUSEHOLDER	EA	1
5	10	XDHZZ		MS35200-25	96906	SCREN, MACHINE, FLAT HEAD	EA	12



ELIFZ009

Figure 6. Power Supply, Side View, Case Removed.

SECTION II

TM 11-6525-201-24P

(1) ILLUSTRATION		(2)	(3)	(4)	(5)	(6) DESCRIPTION	(7)	(8)
(a) FIG NO.	(b) ITEM NO.	SMR CODE	NATIONAL STOCK NUMBER	PART NUMBER	FSCM	USABLE ON CODE	U/M	QTY INC IN UNIT
6	1	XDHZZ		120-846398	144881	CHASSIS ASSEMBLY, TRANSFORMER	EA	1
6	2	PAHZZ	5305-00-071-1322	MS51960-65	969061	SCREW.MACHINE, FLAT HEAD	EA	4
6	3	PAHZZ	5310-00-304-8884	240-000017	52620	NUT, LOCK	EA	4
6	4	XDHZZ		100-846633	144881	SUBPANEL	EA	1
6	5	XDHZZ		100-846634	144881	PANEL OVERLAY	EA	1
6	6	XDOZZ		2/10AMD L	759151	FUSE	EA	1
6	7	PAHZZ	5310-00-934-9748	M535649-244	969061	NUT, HEXAGON	EA	2
6	8	PAHZZ	5310-00-550-3715	MS35333-70	969061	WASHER, LOCK	EA	5
6	9	PAHZZ	5930-00-224-7854	19101-TUL	810731	SWITCH	EA	1
6	10	XDHZZ	5305-00-054-6680	MS51957-53	969061	SCREW.MACHINE, ROUND HEAD	EA	2
6	11	PAHZZ	5310-00-543-2739	MS35333-72	969061	WASHER, LOCK	EA	2
6	12	XDHZZ		100-846631	144881	SUPPORT, TRANSFORMER	EA	1
6	13	XDHHH		100-846632	14881	WIRE HARNESS	EA	1
6	14	PAHZZ	5950-00-220-6695	3873	11537	TRANSFORMER	EA	1
6	15	XDHZZ	5305-00-763-7822	MS51959-14	96906	SCREW, MACHINE, FLAT HEAD	EA	2
6	16	XDHZZ		730000181	14488	CONNECTOR	EA	1
6	17	XDHZZ		100-846635	14488	DECAL, PONE R INPUT	EA	1
6	18	PAHZZ	5305-00-764-0068	MS51959-45	96906	SCREW, MACHINE, FLAT HEAD	EA	2
6	19	XDHZZ		1550M	88245	STANDOFF	EA	2

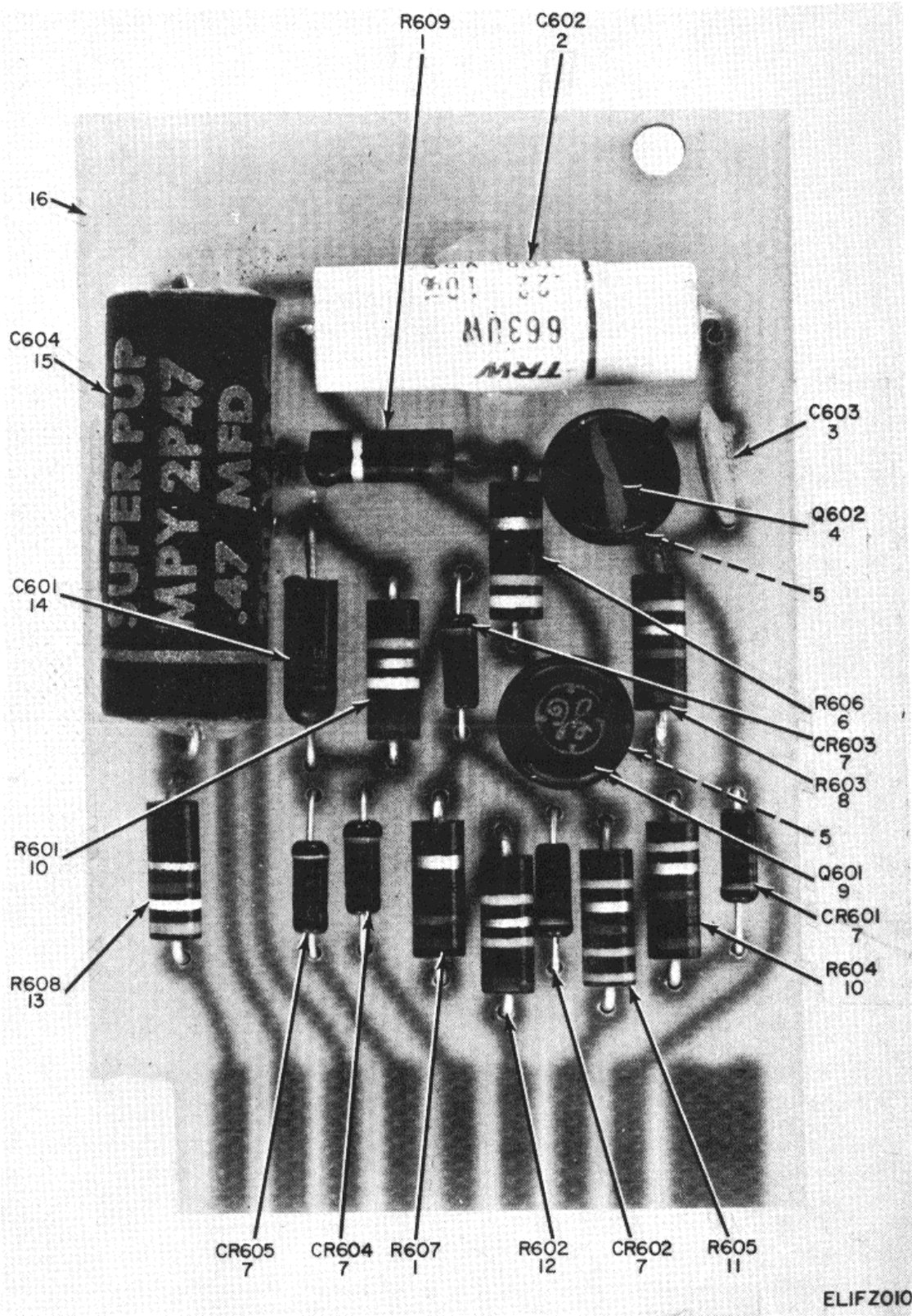


Figure 7. Circuit Board 521.

(1) ILLUSTRATION		(2)	(3)	(4)	(5)	(6)	(7)	(8)
(a) FIG NO.	(b) ITEM NO.	SMR CODE	NATIONAL STOCK NUMBER	PART NUMBER	FSCM	DESCRIPTION USABLE ON CODE	U/M	QTY INC IN UNIT
						GROUP 010104 CIRCUIT BOARD 521		
7	1	PAFZZ	5905-00-190-8883	RC20GF100J	81349	RESISTOR, FIXED, COMPOSITION	EA	2
7	2	XDFZZ		663UW10PERCENT	22096	CAPACITOR	EA	1
7	3	PAFZZ	5910-00-810-4849	TGS10	56289	CAPACITOR	EA	1
7	4	PAFZZ	5961-00-904-7586	JAN2N2323	81349	TRANSISTOR	EA	1
7	5	XDFZZ		7717-5	13103	PAD, TRANSISTOR MOUNTING	EA	2
7	6	PAFZZ	5905-00-252-4018	RC20GF470J	81349	RESISTOR, FIXED, COMPOSITION	EA	1
7	7	PAFZZ	5961-00-892-0734	JANIN483B1	81349	SEMICONDUCTOR DEVICE, DIODE	EA	5
7	8	PAFZZ	5905-00-279-1757	RC20GF152J	81349	RESISTOR, FIXED COMPOSITION	EA	1
7	9	XDFZZ		JAN2NI671T	81349	TRANSISTOR	EA	1
7	10	PAFZZ	5905-00-106-9344	RCR20G010JS	81349	RESISTOR, FIXED, COMPOSITION	EA	2
7	11	PAFZZ	5905-00-192-3971	RC20GF331J	81349	RESISTOR, FIXED, COMPOSITION	EA	1
7	12	PAFZZ	5905-00-190-8874	RC20GF125J	81349	RESISTOR, FIXED, COMPOSITION	EA	1
7	13	PAFZZ	5905-00-279-1890	RC20GF391J	81349	RESISTOR, FIXED, COMPOSITION	EA	1
7	14	PAFZZ	5910-00-691-1255	TE1300	56289	CAPACITOR, ELECTROLYTIC	EA	1
7	15	XDFZZ		723000009	14655	CAPACITOR.TUBULAR	EA	1
7	16	XDFZZ		100846513	14488	CIRCUIT BOARD, TRIP OUT	EA	1

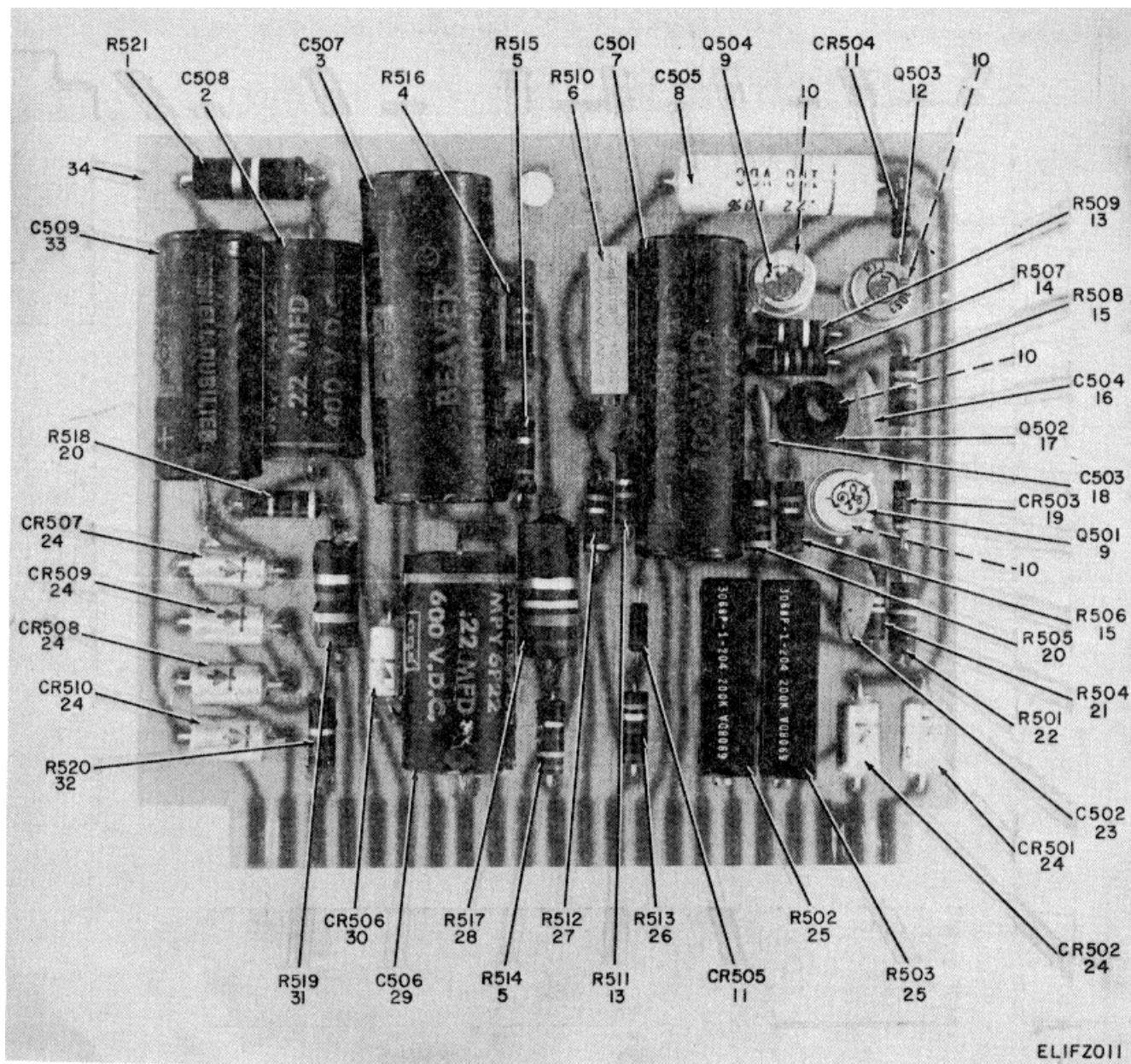


Figure 8. Circuit Board 522.

(1) ILLUSTRATION		(2)	(3)	(4)	(5)	(6) DESCRIPTION	(7)	(8)
(a) FIG NO.	(b) ITEM NO.	SMR CODE	NATIONAL STOCK NUMBER	PART NUMBER	FSCM	USABLE ON CODE	U/M	QTY INC IN UNIT
						GROUP 010105 CIRCUIT BOARD 522		
8	1	PAFZZ	5905-00-299-2003	RC32GF104J	81349	RESISTOR, FIXED, COMPOSITION	EA	1
8	2	PAFZZ	5910-00-147-9682	MPY4P22	14655	CAPACITOR, TUBULAR	EA	1
8	3	PAFZZ	5910-00-666-7565	BR4500	14655	CAPACITOR, ELECTROLYTIC	EA	1
8	4	PAFZZ	5905-00-279-3500	RC20GF183J	81349	RESISTOR, FIXED, COMPOSITION	EA	1
8	5	PAFZZ	5905-00-171-2006	RC2DGF271J	81349	RESISTOR, FIXED, COMPOSITION	EA	2
8	6	XDFZZ		74900052	14488	RESISTOR, VARIABLE	EA	1
8	7	XDFZZ		BR10050	14655	CAPACITOR, ELECTROLYTIC .	EA	1
8	8	XDFZZ		663UW10PCT	22096	CAPACITOR, TUBULAR	EA	1
8	9	XDFZZ		JAN2N1671B	81349	TRANSISTOR	EA	2
8	10	XDFZZ		7717-5	13103	PAD, TRANSISTOR MOUNTING	EA	4
8	11	PAFZZ	5961-00-892-0734	JAN1N483B	81349	SEMICONDUCTOR DEVICE, DIODE	EA	2
8	12	PAFZZ	5961-00-985-9073	2N3053	81349	TRANSISTOR	EA	1
8	13	PAFZZ	5905-00-185-8510	RC20GF103J	81349	RESISTOR, FIXED, COMPOSITION	EA	2
8	14	PAFZZ	5905-00-279-3499	RC20GF273J	81349	RESISTOR, FIXED, COMPOSITION	EA	1
8	15	PAFZZ	5905-00-195-6806	RC20GF102J	81349	RESISTOR, FIXED, COMPOSITION	EA	2
8	16	PAFZZ	5910-00-781-9026	5GA050	56289	CAPACITOR, DISC, CERAMIC	EA	1
8	17	PAFZZ	5961-00-904-7586	JAN2N2323	81349	TRANSISTOR	EA	1
8	18	PAFZZ	5910-00-810-4849	TGS10	56289	CAPACITOR, DISC, CERAMIC	EA	1
8	19	PAFZZ	5961-00-752-6163	JANIN9658	81349	SEMICONDUCTOR ZENER, DIODE	EA	1
8	20	PAFZZ	5905-00-192-3973	RC20GF471J	81349	RESISTOR, FIXED, COMPOSITION	EA	2
8	21	PAFZZ	5905-00-195-6761	RC20GF104J	81349	RESISTOR, FIXED, COMPOSITION	EA	1
8	22	PAFZZ	5905-00-279-1757	RC20GF152J	81349	RESISTOR	EA	1
8	23	PAFZZ	5910-00-577-3281	TGS50	56289	CAPACITOR, DISC, CERAMIC	EA	1
8	24	PAFZZ	5961-00-082-3988	1N3254	81349	SEMICONDUCTOR DEVICE, DIODE	EA	6
8	25	PAFZZ	5905-00-900-0175	3068P1204	80294	RESISTOR, VARIABLE	EA	2
8	26	PAFZZ	5905-00-106-9344	RCR20G101JS	81349	RESISTOR, FIXED, COMPOSITION	EA	1
8	27	PAFZZ	5905-00-279-3504	RC20GF472J	81349	RESISTOR, FIXED, COMPOSITION	EA	1
8	28	PAFZZ	5905-00-279-1943	RC42GF184J	81349	RESISTOR, FIXED, COMPOSITION	EA	1
8	29	PAFZZ	5910-00-724-7396	MPY6P22	14655	CAPACITOR, TUBULAR	EA	1
8	30	XDFZZ		JANIN3563	81349	SEMICONDUCTOR DEVICE, DIODE	EA	1
8	31	PAFZZ	5905-00-279-3837	RC32GF272J	81349	RESISTOR, FIXED, COMPOSITION	EA	1
8	32	PAFZZ	5905-00-190-8883	RC20GF100J	81349	RESISTOR, FIXED, COMPOSITION	EA	1
8	33	PAFZZ	5910-00-806-5578	BR4250	14655	CAPACITOR, ELECTROLYTIC	EA	1
8	34	XDFZZ		100846512	14488	CIRCUIT BOARD, CONTROL	EA	1

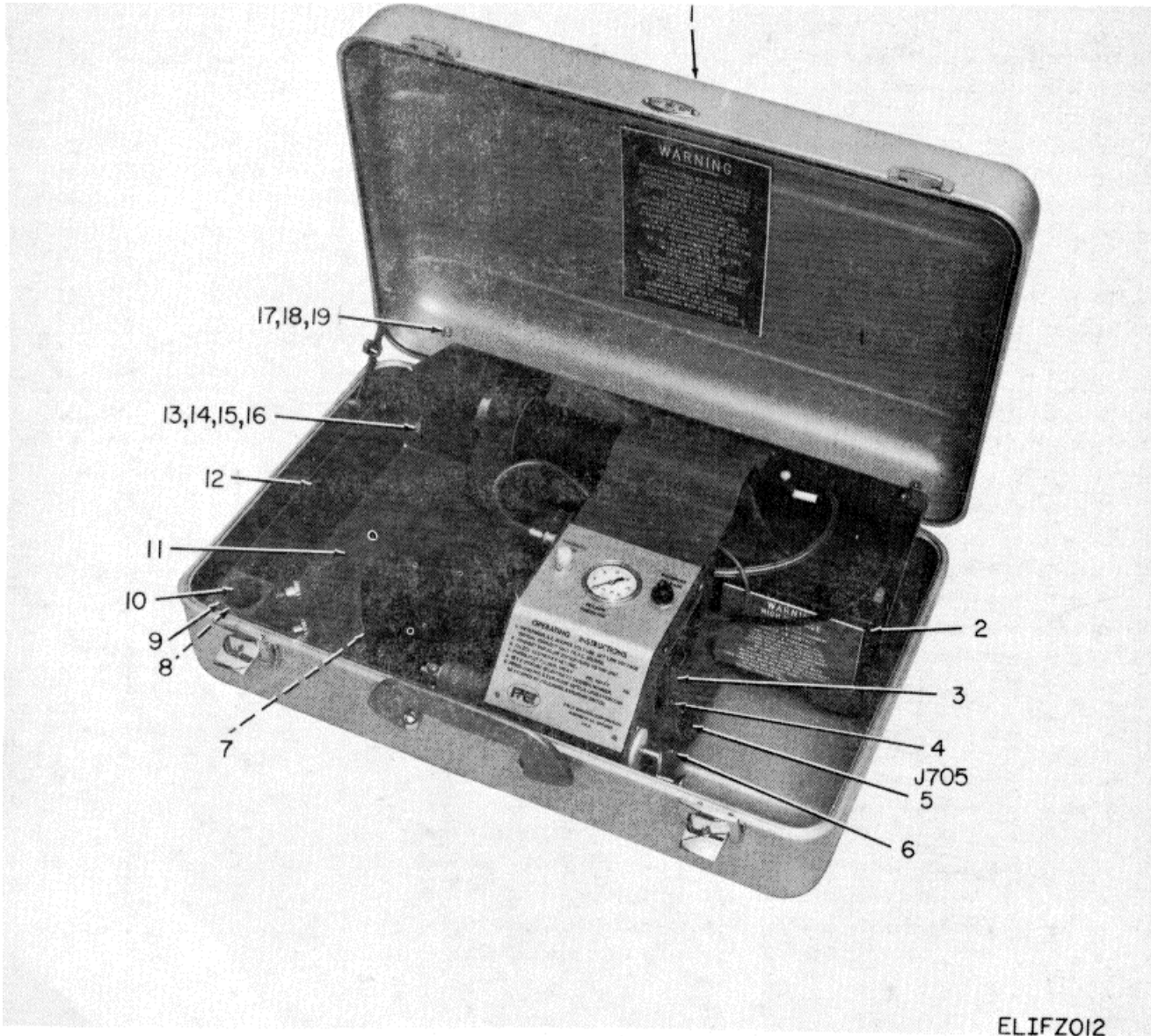


Figure 9. Generator Group OV-47/TAQ-2.

(1) ILLUSTRATION		(2)	(3)	(4)	(5)	(6) DESCRIPTION	(7)	(8)
(a) FIG NO.	(b) ITEM NO.	SMR CODE	NATIONAL STOCK NUMBER	PART NUMBER	FSCM	USABLE ON CODE	U/M	QTY INC IN UNIT
						GROUP 02 GENERATOR GROUP OV-47/TAQ-2		
9	1	XDHZZ		26387	98376	CASE.CARRYING	EA	1
9	2	PAHZZ	5950-00-097-0083	120-846812	52620	TRANSFORMER ASSEMBLY.TRIGGER	EA	1
9	3	XDHZZ		100-846343	14488	NAMEPLATE	EA	1
9	4	XDHZZ		MS35216-27	96906	SCREW, MACHINE, PAN HEAD	EA	5
9	5	PAHZZ	5935-00-097-0072	100-846342	52620	SOCKET, CABLE ASSEMBLY	EA	1
9	6	PAHZZ	5305-00-054-6649	M551957-25	96906	SCREW, MACHINE, BINDING HEAD	EA	10
9	7	PAHZZ	5305-00-071-1322	MS51960-65	96906	SCREW, MACHINE, FLAT HEAD	EA	4
9	B	PAHZZ	5305-00-765-4257	M551959-43	96906	SCREW, MACHINE, FLAT HEAD	EA	5
9	9	XDHZZ		100-846341	14488	SLPPOINT BLOCK.MAST	EA	1
9	10	XDHZZ		100-846381	14488	FITTING, MAST	EA	1
9	11	XDHZZ		120-846309	14488	CHASSIS ASSEMBLY, PULSER	EA	1
9	12	XDHZZ		2382-1	71279	STANDOFF, TERMINAL	EA	1
9	13	PAHZZ	5305-00-059-3662	M551958-66	96906	SCREW, MACHINE, PAN HEAD	EA	2
9	14	XDHZZ		7264A	71218	FOOT, RUBBER	EA	4
9	15	XDHZZ		8716	83330	STANDOFF	EA	2
9	16	PAHZZ	5305-00-231-0642	100-846346	52620	SPACER	EA	1
9	17	PAHZZ	5305-00-934-9765	M535650-304	96906	NUT, HEXAGON	EA	2
9	18	PAHZZ	5310-00-543-5933	S535133-73	96906	WASHER, LOCK	EA	2
9	19	PAHZZ	5305-00-059-3660	M551958-64	96906	SCREW, MACHINE, PAN HEAD	EA	2

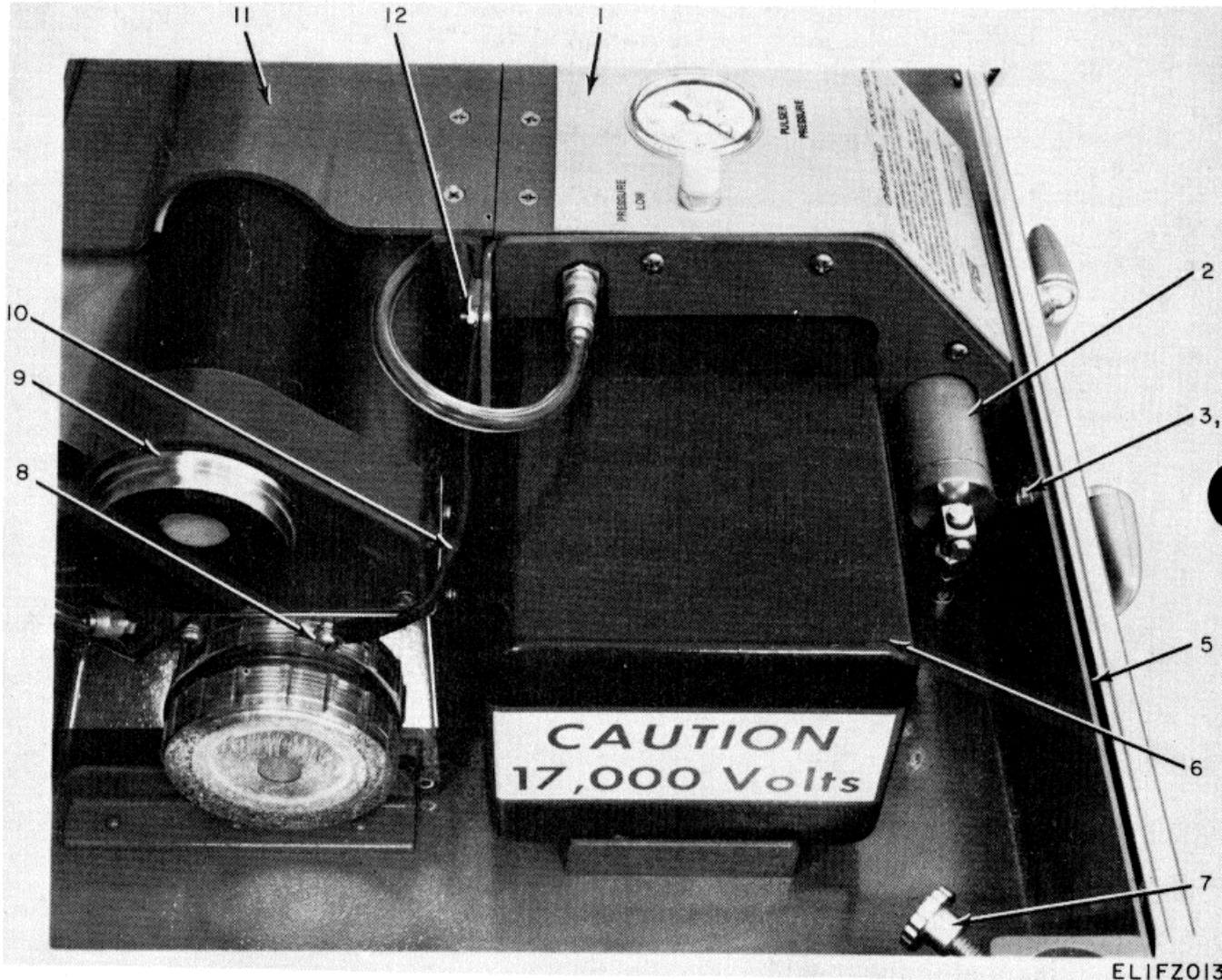


Figure 10. Generator Group OV-47/TAQ-2, Left Side

SECTION II

TM 11-6525-201-24P

(1) ILLUSTRATION		(2)	(3)	(4)	(5)	(6) DESCRIPTION	(7)	(8)
(a) FIG NO.	(b) ITEM NO.	SMR CODE	NATIONAL STOCK NUMBER	PART NUMBER	FSCM	USABLE ON CODE	U/M	QTY INC IN UNIT
10	1	XDHZZ		100-846359	14488	TERMINAL GUARD	EA	1
10	2	XDFHH		120-846312	14488	PRESSURE SYSTEM	EA	1
10	3	PAHZZ	5305-00-988-7603	MS16995-27	96906	SCREW, CAP, SOCKET HEAD	EA	1
10	4	PAHZZ	5310-00-543-2739	MS35333-72	96906	WASHER, LOCK	EA	1
10	5	XDHZZ		100-846344	14488	PLATE, SPACER	EA	3
10	6	PAHZZ	6635-00-092-4359	130-107100	14488	HIGH VOLTAGE POWER SUPPLY	EA	1
10	7	PAHZZ	5305-00-224-1101	385-521	15598	THUMBSCREW	EA	2
10	8	XDHZZ	5305-00-054-5642	US51957-8	96906	SCREW MACHINE, FLAT HEAD	EA	2
10	9	XDFHH		120-846310	14488	PULSER UNIT	EA	1
10	10	XDHZZ		120-845250	14488	CABLE, GROUND	EA	1
10	11	XDHZZ		100-846340	14488	TIE PLATE.PULSER	EA	1
10	12	PAHZZ	5310-00-934-9761	MS35649-264	96906	NUT, HEXAGON	EA	2

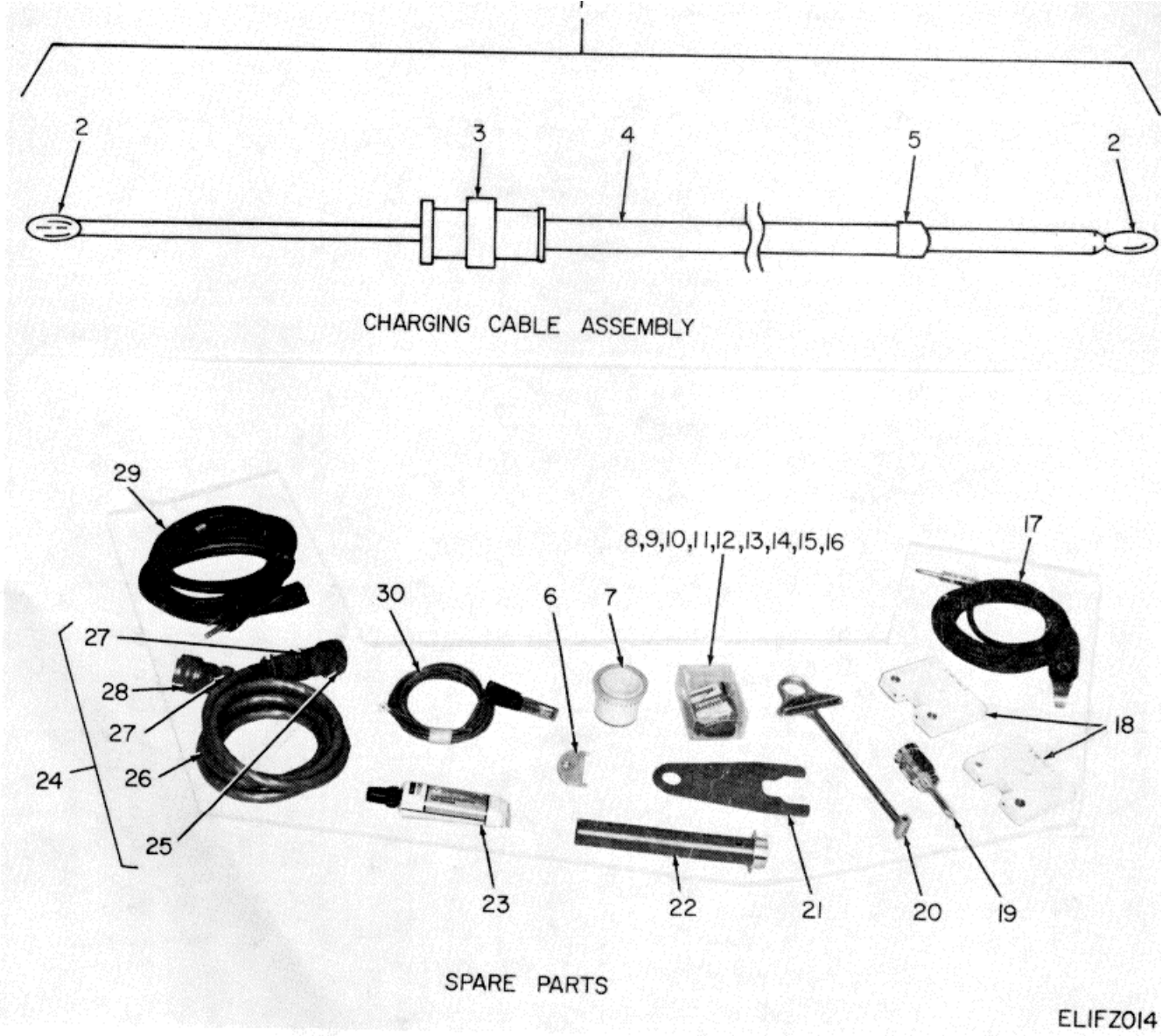
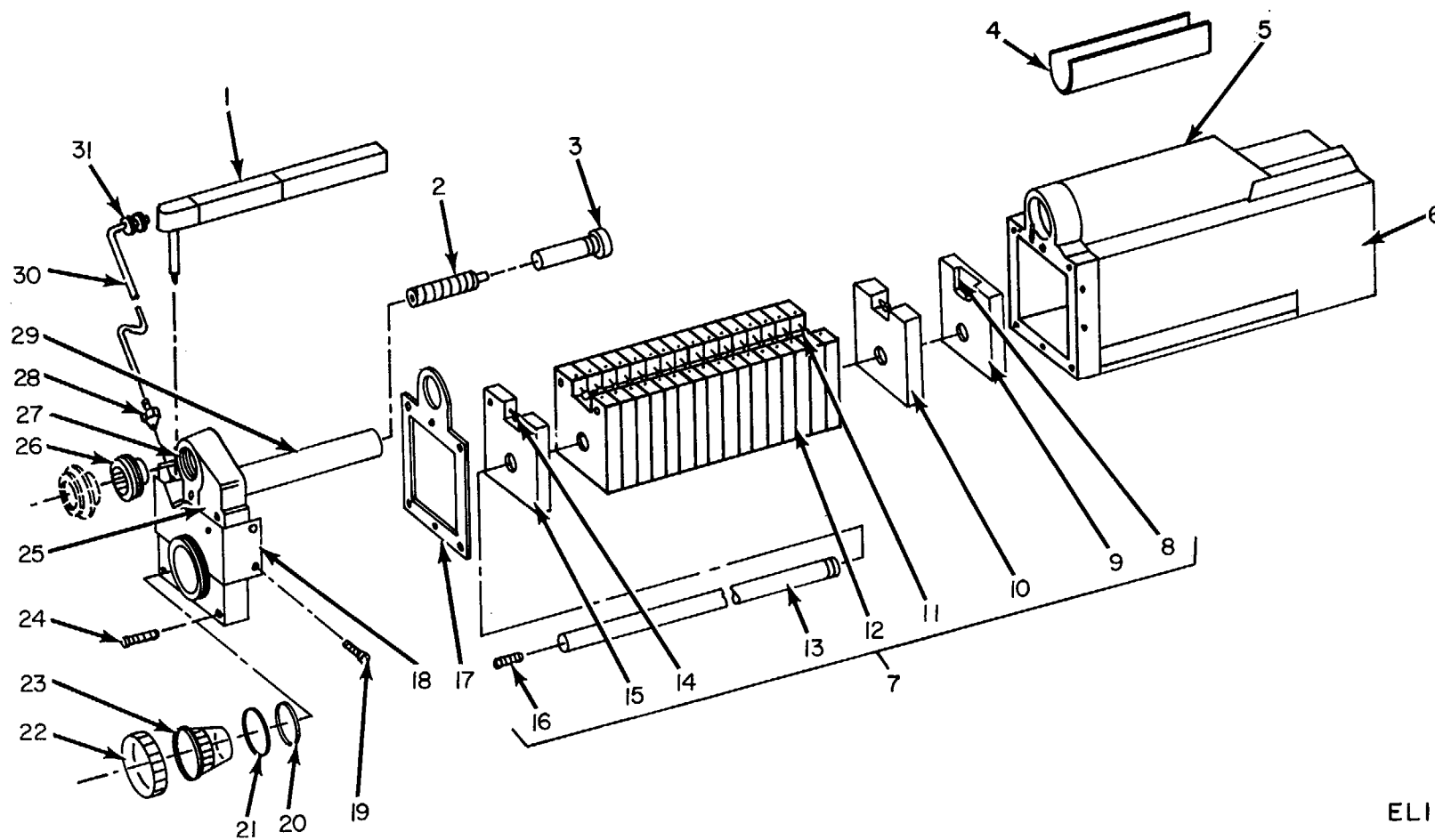


Figure 11. Generator Group OV-47/TAQ-2, Cable Assembly and Spare Parts.

SECTION II

TM 11-6525-201-24P

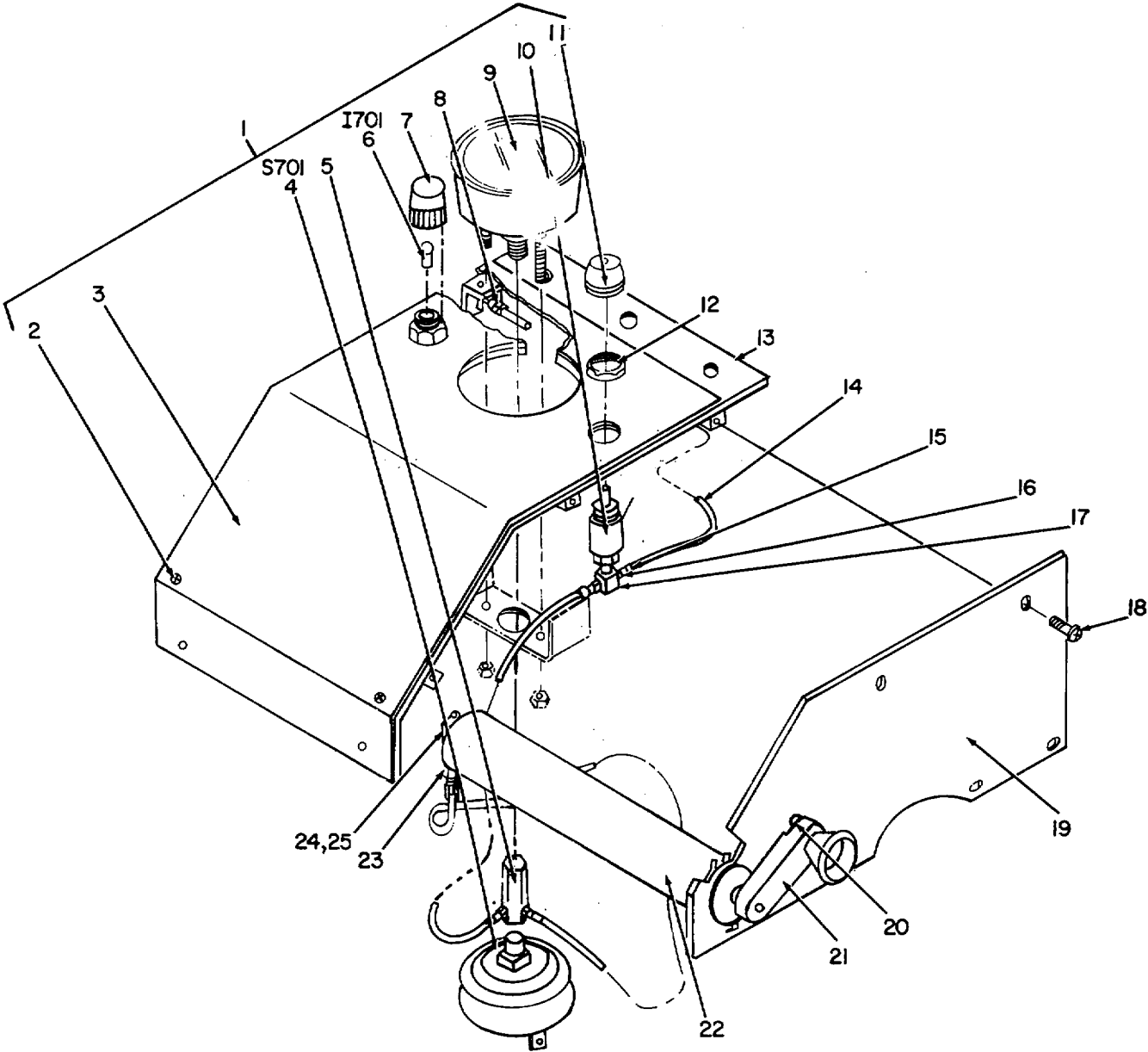
(1) ILLUSTRATION		(2)	(3)	(4)	(5)	(6) DESCRIPTION	(7)	(8)
(a) FIG NO.	(b) ITEM NO.	SMR CODE	NATIONAL STOCK NUMBER	PART NUMBER	FSCM	USABLE ON CODE	U/M	QTY INC IN UNIT
11	1	XDHHH		120-846620	14488	CABLE ASSEMBLY.CHARGING	EA	1
11	2	PAHZZ	5940-00-170-4469	121	83330	PLUG, TIP	EA	2
11	3	XDHZZ		100-845170	14488	CONNECTOR, RECEPTACLE, ELECTRICAL	EA	1
11	4	XDHZZ		735-000111	14488	CABLE	EA	1
11	5	XDHZZ		765-000104	14488	TUBING, SHRINK	EA	1
11	6	PAHZZ	6635-00-081-2248	100-101080	52620	CAP REMOVER, SPECIAL	EA	1
11	7	PAHZZ	6635-00-081-2953	120-846127	52620	CASE ASSEMBLY, DESICCANT	EA	1
11	8	PAOZZ	5920-00-184-1437	MDL2-10	71400	FUSE	EA	1
11	9	PAHZZ	5120-00-347-2376	116	84353	KEY, SOCKET HEAD SCREW	EA	1
11	10	PAHZZ	5120-00-240-5292	18	81348	KEY, SOCKET HEAD SCREW	EA	1
11	11	PAHZZ	5120-00-889-2163	964	84353	KEY, SOCKET HEAD SCREW	EA	1
11	12	PAHZZ	5120-00-240-5300	316	84353	KEY.SOCKET HEAD SCREW	EA	1
11	13	XDHZZ		MA-4-1-2	04609	DRILL.HEXAGONAL BIT	EA	1
11	14	XDHZZ		97-43	84353	DRILL, TWIST	EA	1
11	15	XDHZZ		2-136	83259	O RING	EA	2
11	16	PAHZZ	5330-00-962-3570	2-127	83259	O RING	EA	1
11	17	PAHZZ	6635-00-081-2938	120-845160	12705	CABLE ASSEMBLY, TRIGGER	EA	1
11	18	PAHZZ	6635-00-081-3005	120-846121	12705	MODULE ASSEMBLY	EA	2
11	19	XDHZZ		2762	84353	SCREWDRIVER, CROSS TIP	EA	1
11	20	XDHZZ		1N80991/4	74855	WRENCH, TORQUE	EA	1
11	21	XDHZZ		100-846647	14488	WRENCH	EA	1
11	22	PAHZZ	6635-00-092-4357	130-272-500	52620	LOAD ASSEMBLY, RESISTIVE	EA	1
11	23	PAHZZ	5970-00-839-2763	DC-S	71984	LUBRICANT	EA	1
11	24	XDHHH		120-846313	14488	CONTROL CABLE ASSEMBLY	EA	1
11	25	XDHZZ		MS/AN3107TA-1-19 S	74868	CONNECTOR. RECEPTACLE, ELECTRICAL	EA	1
11	26	PAHZZ	6145-00-829-3919	8466	70903	CABLE	EA	1
11	27	XDHZZ		MS/AN9?67-18-8	74868	CLAMP.CABLE	EA	2
11	28	XDHZZ		MS/AN3107-A-18-1 9P	74868	CONNECTOR.RECEPTACLE.ELECTRICAL	EA	1
11	29	XDHZZ		17461S163SJ	70903	CRDO ASSEMBLY, ELECTRICAL	EA	1
11	30	XDHZZ		120-846612	14488	WIRE ASSEMBLY, GROUND	EA	1



ELIFZO15

Figure 12. Pulsar Unit.

(1) ILLUSTRATION		(2)	(3)	(4)	(5)	(6) DESCRIPTION	(7)	(8)
(a) FIG NO.	(b) ITEM NO.	SMR CODE	NATIONAL STOCK NUMBER	PART NUMBER	FSCM	USABLE ON CODE	U/M	QTY INC IN UNIT
						GROUP 0201 PULSER UNIT		
12	1	PAHZZ	5905-00-095-2669	120-245640	52620	RESISTOR ASSEMBLY, CHARGING	EA	1
12	2	PAHZZ	5905-00-095-2670	120-245230	52620	RESISTOR ASSEMBLY, TRIGGER	EA	1
12	3	XDHZZ		100-245280	14488	HOLDER, TRIGGER RESISTOR	EA	1
12	4	PAHZZ	6635-00-081-2532	100-846345	52620	SHIELD, INSULATING	EA	1
12	5	PAHZZ	5935-00-127-9574	120-245050	52620	CONNECTOR ASSEMBLY, ANODE	EA	1
12	6	XDHZZ		120-846129	14488	CASE ASSEMBLY, PULSER	EA	1
12	7	XDHHH		120-846128	14488	STACK ASSEMBLY, MODULE	EA	1
12	8	PAHZZ	6635-00-081-2266	100-846145	52620	BALL, SPARK, MODIFIED	EA	1
12	9	PAHZZ	6635-00-081-3006	120-846113	52620	MODULE ASSEMBLY	EA	1
12	10	PAHZZ	6635-00-081-2991	120-846119	52620	MODULE ASSEMBLY, TOP	EA	1
12	11	PAHZZ	6635-00-148-9391	100-245430	52620	BALL, SPARK	EA	34
12	12	PAHZZ	6635-00-081-3005	120-846121	52620	MODULE ASSEMBLY	EA	16
12	13	XDHZZ		100-245780	14488	ROD, LOCKING	EA	1
12	14	PAHHH	6635-00-081-2949	120-846140	52620	BALL ASSEMBLY, TRIGGER	EA	1
12	15	PAHZZ	6635-00-081-2367	120-846144	52620	MODULE ASSEMBLY, TRIGGER	EA	1
12	16	XDHZZ		120-846139	14488	SCREW	EA	1
12	17	XDHZZ		100-245630	14488	GASKET	EA	1
12	18	XDHZZ		100-846135	14488	CLAMP, GROUND	EA	1
12	19	PAHZZ	5305-00-054-6650	MS51957-26	96906	SCREW, MACHINE, FLAT HEAD	EA	6
12	20	XDHZZ		2-136	83259	O RING	EA	1
12	21	XDHZZ	5330-00-962-3570	2-127	83259	O RING	EA	1
12	22	XDHZZ		100-846109	14488	CAP, DESICCANT	EA	1
12	123	PAHZZ	6635-00-081-2953	120-846127	52620	CASE ASSEMBLY, DESICCANT	EA	1
12	24	PAHZZ	5305-00-227-1620	100-245750	52620	SCREW, CAP, SOCKET HEAD	EA	6
12	25	XDHZZ		120-846131	14488	END CAP ASSEMBLY	EA	1
12	26	PAHZZ	6635-00-081-2956	120-846125	52620	NOSE ASSEMBLY, TUBE	EA	1
12	27	PAHZZ	6635-00-081-2936	120-245820	52620	RING ASSEMBLY, CONTACT	EA	1
12	28	XDHZZ		11752	90526	FITTING, HOSE	EA	1
12	29	XDHZZ		TYPEFLT105	23172	TUBING	EA	1
12	30	XDHZZ		551-004062	14488	TUBING	EA	1
12	31	XDHZZ		MOC-F-MALE	90526	CONNECTOR, MALE	EA	1



ELIFZ016

Figure 13. Pressure System.

SECTION II

TM 11-6525-201-24P

(1) ILLUSTRATION		(2)	(3)	(4)	(5)	(6) DESCRIPTION	(7)	(8)
(a) FIG NO.	(b) ITEM NO.	SMR CODE	NATIONAL STOCK NUMBER	PART NUMBER	FSCM	USABLE ON CODE	U/M	QTY INC IN UNIT
						GROUP 0203 PRESSURE SYSTEM		
13	1	PAHHH	6685-00-279-2893	120-846311	52620	GAUGE SECTION	EA	1
13	2	PAHZZ	5305-00-054-5636	MS35233-2	96906	SCREW, MACHINE, FLAT HEAD	EA	2
13	3	XDHZZ		100-846353	14488	OVERLAY.PANEL	EA	1
13	4	XDHZZ		M1-3591	74400	SWITCH, PRESSURE	EA	1
13	5	XDHZZ		100-316060	14488	FITTING, HEXAGON	EA	1
13	6	PAOZZ	6240-00-155-7836	327	08806	LAMP	EA	1
13	7	PAOZZ	6210-00-044-2370	856-SWM	08717	LIGHT.PANEL	EA	1
13	B	XDHZZ		MQC-V3	90526	QUICK CONNECT	EA	1
13	9	PAHZZ	6685-00-913-8247	1DFN	38508	GAUGE.PRESSURE	EA	1
13	10	PAHZZ	4310-00-433-3005	NAV-2	90526	VALVE.TWO WAY	EA	1
13	11	PAOZZ	5355-00-218-6441	M60002-105-125-6	78553	KNOB	EA	1
13	12	PAHZZ	5310-00-081-8087	MS21044N06	96906	NUT, LOCK	EA	2
13	13	XDHZZ		120-846317	14488	MOUNTING PLATE ASSEMBLY	EA	1
13	14	XOHZZ		551-004602	14488	TUBING	EA	2
13	15	XDHZZ		5000-1	90526	CLAMP.HOSE	EA	6
13	16	XDHZZ		11752	90526	FITTING, HOSE	EA	1
13	17	XDHZZ		15002-4	90526	X-FITTING	EA	2
13	18	XDHZZ	5305-00-054-5642	M51957-8	96906	SCREW, MACHINE, FLAT HEAD	EA	1
13	19	XDHZZ		100-846356	14488	PLATE, MOUNTING	EA	1
13	20	XDHZZ		MS35216-42	96906	SCREW, MACHINE, PAN HEAD	EA	1
13	21	XDHZZ		100-846646	14488	EXTENSION, HANDLE	EA	1
13	22	PAHZZ	6635-00-092-4361	120-846414	14488	PUMP ASSEMBLY	EA	1
13	23	XDHZZ	4820-00-229-3364	MCV-1	90526	VALVE, CHECK	EA	1
13	24	XDHZZ		11755	90526	PLUG, SCREW	EA	3
13	25	XDHZZ		11761	90526	GASKET, NEOPRENE	EA	10

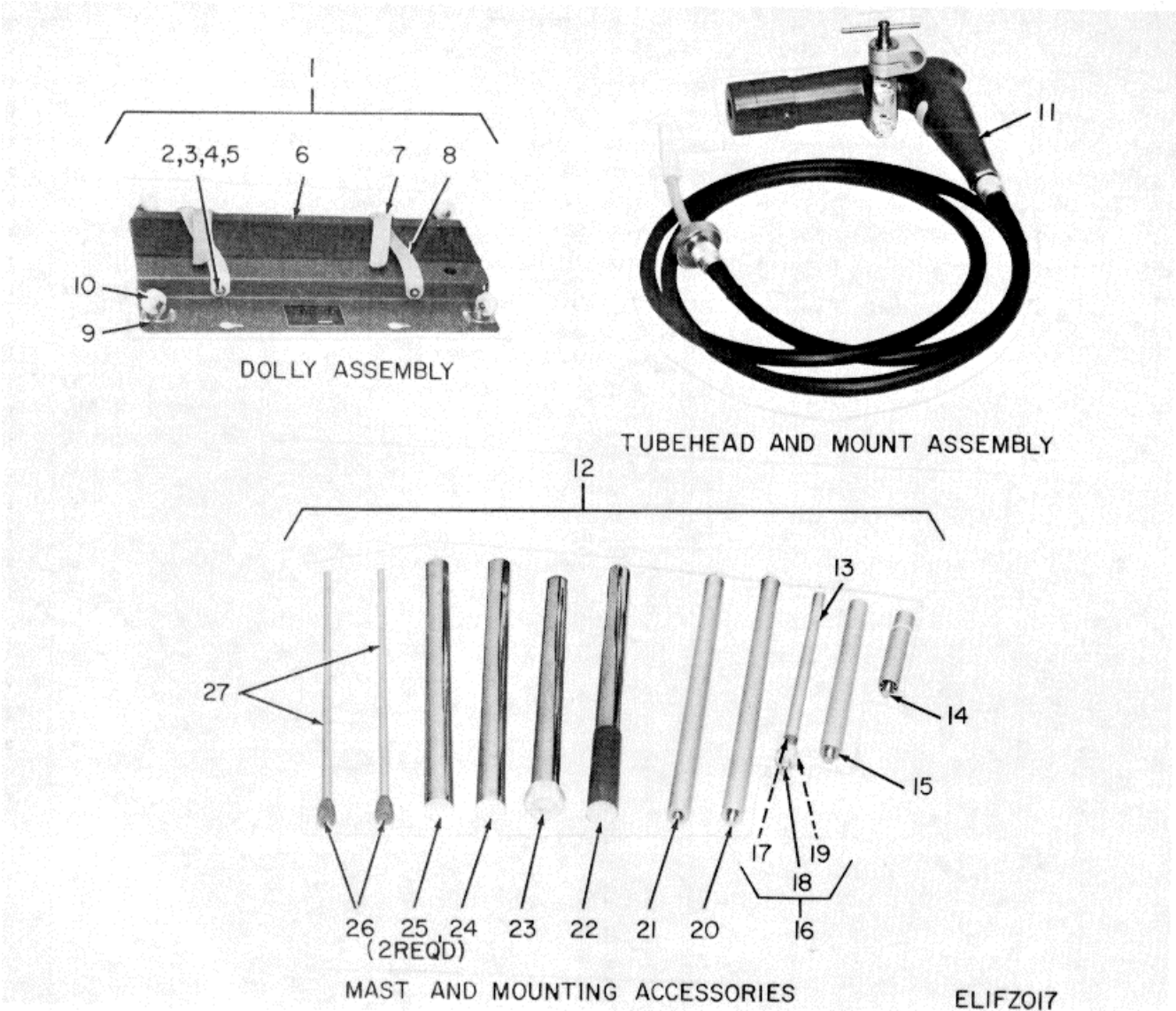
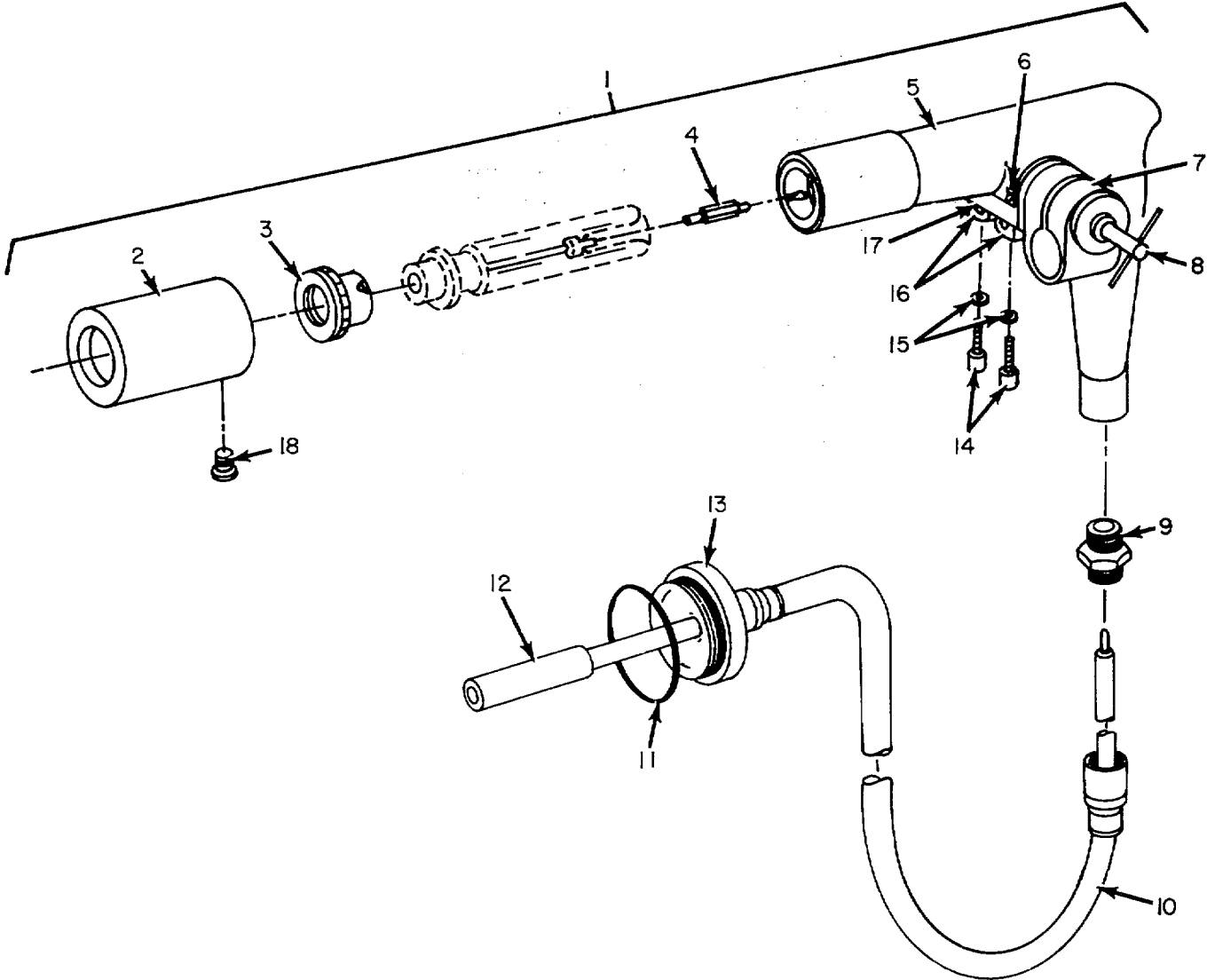


Figure 14. Accessories, Cable.

SECTION II

TM 11-6525-201-24P

(1) ILLUSTRATION		(2)	(3)	(4)	(5)	(6)	(7)	(8)
(a) FIG NO.	(b) ITEM NO.	SMR CODE	NATIONAL STOCK NUMBER	PART NUMBER	FSCM	DESCRIPTION USABLE ON CODE	U/M	QTY INC IN UNIT
						GROUP 03 ACCESSORIES, CABLE		
14	1	XDOHH		120-846319	14488	DOLLY ASSEMBLY	EA	1
14	2	PAHZZ	5310-00-934-9761	MS35649-264	96906	NUT, HEXAGON	EA	4
14	3	XDHZZ		MS15795-06	96906	WASHER, FLAT	EA	4
14	4	XDHZZ	5305-00-054-5642	MS51957-8	96906	SCREW, MACHINE, FLAT HEAD	EA	4
14	5	PAHZZ	5365-00-216-1023	8704	83330	STANDOFF	EA	4
14	6	XDHZZ		100-846366	14488	CHASSIS.DOLLY	EA	1
14	7	XDHZZ		100-846648	14488	STRAP, TIE-DOWN	EA	2
14	8	XDHZZ		100-846649	14488	STRAP, TIE-DOWN	EA	2
14	9	XKDHZZ		260-000003	14488	RIVET,FLAT HEAD	EA	16
14	10	XDHZZ		5335	21672	CASTER	EA	4
14	11	XDOHH		120-846321	14488	TUBEHEAD AND MOUNT ASSEMBLY	EA	1
14	12	XDOHH		120-846323	14488	MAST ASSEMBLY	EA	1
14	13	XDOZZ		120-846338	14488	TUBE ASSEMBLY.OUTER	EA	1
14	14	XDOZZ		120-846335	14488	ADAPTER, SECTION ASSEMBLY	EA	1
14	15	XDOZZ		120-846334	14488	MAST EXTENSION ASSEMBLY,MIDDLE	EA	1
14	16	XDOZZ		120-846330	14488	BRACE ASSEMBLY	EA	1
14	17	XDHZZ		100-846388	14408	FERRULE	EA	1
14	18	XDHZZ		120-846337	14488	TUBE ASSEMBLY, INNER	EA	1
14	19	XDHZZ	5310-00-481-4484	ZY-812-D	02570	NUT	EA	1
14	20	XDOZZ		120-846333	14488	MAST EXTENSION ASSEMBLY,BOTTOM	EA	1
14	21	XDOZZ		120-846336	14488	MAST EXTENSION ASSEMBLY,I,PPER	EA	1
14	22	XDOZZ		100-846379	14488	BASE SECTION	EA	1
14	23	XDZOZ		120-846332	14488	TOP SECTION ASSEMBLY	EA	1
14	24	XDOZZ		100-846380	14488	MAST SECTION	EA	1
14	25	XDOZZ		100-846373	14488	MAST SECTION.MIDDLE	EA	2
14	26	XDOZZ		2911	71855	CAP, RUBBER	EA	2
14	27	XDOZZ		100-846360	14488	ROD, SPACER	EA	2



ELIFZO18

Figure 15. Accessories, Cable, Tubehead and Mount Assembly.

SECTION II

TM 11-6525-201-24P

(1) ILLUSTRATION		(2)	(3)	(4)	(5)	(6)	(7)	(8)
(a) FIG NO.	(b) ITEM NO.	SMR CODE	NATIONAL STOCK NUMBER	PART NUMBER	FSCM	DESCRIPTION USABLE ON CODE	U/M	QTY INC IN UNIT
15	1	XDHHH		120-312500	14488	TUBEHEAD ASSEMBLY, MODIFIED	EA	1
15	2	PACZZ	635-00-081-2948	120-312512	52620	SHIELD ASSEMBLY, CUP	EA	1
15	3	PACZZ	6635-00-081-2562	12010-1511	52620	CAP ASSEMBLY, TUBE	EA	1
15	4	PAHZZ	5935-00-127-9574	120-245050	52620	CONNECTOR, ANODE	EA	1
15	5	XDHZZ		120-312510	14488	TUBEHEAD, RIGHT ANGLE	EA	1
15	6	XDHZZ		100-846643	14488	PIN, LOCK	EA	1
15	7	XDHZZ		100-846370	14488	CLAMP, TUBEHEAD	EA	1
15	8	XDHZZ		120-846325	14488	SCREW ASSEMBLY, LOCKING	EA	1
15	9	PAHZZ	5935-00-095-3327	100-311724	52620	CONNECTOR, PLUG, ELECTRICAL	EA	1
15	10	XDHZZ		120-111411	14488	CASLE ASSEMBLY	EA	1
15	11	XDHZZ		2-136	83259	O RING	EA	1
15	12	PAHZZ	5935-00-222-7687	100-311616	52620	SHIELD, CONNECTOR	EA	1
15	13	PAHZZ	5935-00-193-0179	100-311617	52620	ADAPTOR, CABLE	EA	1
15	14	XDHZZ		MS35461-27	96906	SCREW, CAP, SOCKET HEAD	EA	2
15	15	PAHZZ	5310-00-080-6004	MS15795-214	96906	WASHER, FLAT	EA	2
15	16	XDHZZ		100-846371	14488	CLAMP, SPACER RD	EA	2
15	17	XDHZZ		100-846369	14488	BRACKET, TUBEHEAD MOUNTING	EA	1
15	18	PACZZ	5305-00-059-3655	M551958-59	96906	SCREW, MACHINE, PAN HEAD	EA	1
					39			

NATIONAL STOCK NUMBER INDEX AND PART NUMBER INDEX

NOTE: LATEST NATIONAL STOCK NUMBER AND PART NUMBER ASSIGNMENTS ARE INCLUDED AT END OF**INDEX**

STOCK NUMBER	FIG.	ITEM	STOCK NUMBER	FIG.	ITEM		
6210-00-044-2370	13	7	5905-00-279-1890	7	13		
5935-00-078-1707	5	1	5905-00-279-1943	8	28		
5310-00-081-8087	4	40	5905-00-279-3499	8	14		
5310-00-081-8087	5	5	5905-00-279-3500	8	4		
5310-00-081-8087	13	12	5905-00-279-3504	8	27		
			5905-00-279-3837	8	31		
5935-00-118-8221	4	18	5905-00-295-4083	4	59		
5910-00-147-9682	8	2	5905-00-299-2003	8	1		
6240-00-155-7836	4	4	5310-00-543-2739	4	27		
6240-00-155-7836	13	6	5310-00-543-2739	6	11		
5935-00-163-0004	4	50	5310-00-543-2739	10	4		
5940-00-170-4469	11	2	5310-00-543-5933	2	9		
5905-00-171-2006	8	5	5310-00-543-5933	9	18		
5905-00-185-8510	8	13	5910-00-577-3281	8	23		
5905-00-190-8874	7	12	5935-00-683-2746	4	32		
5905-00-190-8883	7	1	5910-00-691-1255	7	14		
5905-00-190-8883	8	32	5910-00-724-7396	8	29		
5905-00-192-3971	7	11	5961-00-752-6163	8	19		
5905-00-192-3973	8	20	5910-00-781-9026	8	16		
5905-00-195-6761	8	21	5910-00-806-5578	8	33		
5905-00-195-6806	8	15	5910-00-810-4849	7	3		
5905-00-197-0399	4	47	5910-00-810-4849	8	18		
5310-00-218-6445	4	9	5920-00-818-1592	5	9		
5950-00-220-6695	6	14	6145-00-829-3919	11	26		
5930-00-220-6850	4	5	5970-00-839-2763	11	23		
5930-00-224-7854	6	9	5910-00-894-7163	4	31		
4820-00-229-3364	13	23	5961-00-899-9347	4	46		
6210-00-245-7525	4	3	5961-00-904-7586	7	4		
5905-00-252-4018	7	6	5961-00-904-7586	8	17		
5905-00-279-1757	7	8	5935-00-917-3453	4	19		
5905-00-279-1757	8	22	6685-00-973-3247	13	9		
PART NUMBER	FSCM	FIG. NO.	ITEM NO.	PART NUMBER	FSCM	FIG. NO.	ITEM NO.
BBR4250	14655	8	33	RC20GF103J	81349	8	13
BR10O5O	14655	8	7	RC20GF104J	81349	8	21
8BR4500	14655	8	3	RC20GF125J	81349	7	12
B716	83330	9	15	RC10GF152J	81349	7	8
DC-5	71984	11	23	RC20GF152J	81349	8	22
JAN1N3563	81349	8	30	RC20GF183J	81349	8	4
JAN1N965B	81349	8	19	RC20GF271J	81349	8	F
JAN2N1671B	81349	7	9	RC20GF273J	81349	8	1
JAN2N1671B	81349	8	9	RC20GF331J	81349	7	111
JAN2N2323	81349	7	4	RC20GF391J	81349	7	13
JAN2N2323	81349	8	17	RC20GF470J	81349	7	6
JJ034	81349	4	32	RC20GF471J	81349	8	20
MA-4-1-2	04609	11	13	RC20GF472J	81349	8	27
MAV-2	90526	13	10	RC32GF104J	81349	8	1
MCV-1	90526	13	23	RC32GF272J	81349	8	31
M1-3591	74400	13	4	RC42GF184J	81349	8	28
MPY4P22	14655	8	2	RH500	91637	4	59
MPY6P22	14655	8	29	RLA8S-2	81312	4	55
MQC-F-MALE	90526	12	31	TE1300	56289	7	14
MQC-V3	90526	13	8	TG-P1O	56289	4	31
MS/AN3107-A-18-19P	74868	11	28	TGS10	56289	7	3
MS/AN31007A-18-19S	74868	11	25	TGS10	56289	8	18
MS/AN9767-18-8	74868	11	27	TGS50	56289	8	23
MS15795-06	96906	14	3	TYPEFLT105	23172	12	29
MS21044N06	96906	4	40	TYPE335	71744	4	10
MS21044N06	96906	5	5	VPR-5-F	12697	4	47
MS21044N06	96906	13	12	ZY-812-1	02570	14	19
MS35200-15	96906	4	24	1DFM	38508	13	9
MS35200-25	96906	4	39	1N2988A	04713	4	46
MS35200-25	96906	5	10	1N80991/4	74855	11	20
MS35216-12	96906	4	38	100-101080	52620	11	31
MS35216-27	96906	4	8	100-186210	52620	3	4
MS35216-27	96906	9	4	100-245280	14488	12	3
MS35216-33	96906	4	45	100-245430	52620	12	11
MS35216-42	96906	13	20	100-245630	14488	12	17
MS35216-8	96906	4	16	100-245750	14488	12	24
MS35333-70	96906	6	8	100-245780	14488	12	13
MS35333-71	96906	4	43	100-311616	52620	15	12
MS35333-72	96906	4	27	100-311617	52620	15	13
MS35333-72	96906	6	11	100-311724	52620	15	9
MS35333-72	96906	10	4	100-316060	14488	13	5
MS35333-73	96906	2	9	100-427909	52620	4	29
MS35461-27	96906	15	14	100-845170	14488	11	?
MS35650-104	96906	2	8	100-846109	14488	12	2
OK-258/TAQ-2	80058	1	2	100-846135	14488	12	it
OV-47/TAQ-2	80058	1	1	100-846145	52620	12	8
RC20GF10J	81349	7	1	100-846318	14488	2	3
RC20GF100J	81349	8	32	100-846340	14488	10	11
RC20GF102J	81349	8	15	100-846341	14488	9	9

NATIONAL STOCK NUMBER AND PART NUMBER INDEX

PART NUMBER	FSCM	FIG. NO.	ITEM NO.	PART NUMBER	FSCM	FIG. NO.	ITEM NO.
100-846342	52620	9	5	120-846313	14488	11	24
100-846343	14488	2	12	120-846315	14488	11	7
100-846343	14488	9	3	120-846317	14488	13	13
100-846344	14488	10	5	120-846319	14488	14	1
100-846345	52620	12	4	120-846321	14488	14	11
100-846346	52620	9	16	120-846322	14488	2	5
100-846353	14488	13	3	120-846323	14488	14	12
100-846356	14488	13	19	120-846325	14488	15	8
100-846359	14488	10	1	120-846326	14488	4	1
100-846360	14488	14	27	120-846327	14488	3	6
100-846363	14488	2	11	120-846328	14488	4	62
100-846366	14488	14	6	120-846330	14488	14	16
100-846369	14488	15	17	120-846332	14488	14	23
100-846370	14488	15	7	120-846333	14488	14	20
100-846371	14488	15	16	120-846334	14488	14	15
100-846373	14488	14	25	120-846335	14488	14	14
100-846379	14488	14	22	120-846336	14488	14	21
100-846380	14488	14	24	120-846337	14488	14	18
100-846381	14488	9	10	120-846338	14488	14	13
100-846388	14488	14	17	120-846339	14488	4	36
100-846394	14488	4	58	120-846390	14488	4	54
100-846395	14488	4	57	120-846398	14488	6	1
100-846396	14488	4	41	120-846414	14488	13	22
100-846397	14488	4	48	120-846521	14488	3	3
100-846510	14488	4	60	120-846522	14488	3	1
100-846516	14488	4	35	120-846611	14488	2	1
100-846519	14488	4	37	120-846612	14488	11	30
100-846520	14488	4	28	120-846620	14488	11	1
100-846524	14488	4	52	120-846812	52620	9	2
100-846631	14488	6	12	121	83330	11	2
100-846632	14488	6	13	130-107100	14488	10	6
100-846633	14488	6	4	30-272-500	52620	11	22
100-846634	14488	6	5	140-533000	14488	2	4
100-846635	14488	6	17	15002-4	90526	13	17
100-846637	14488	4	11	1550M	88245	6	19
100-846639	14488	5	4	17461S163SJ	70903	11	29
100-846641	14488	2	2	18	81348	11	10
100-846643	14488	15	6	19101-7UL	81073	6	9
100-846646	14488	13	21	2-127	83259	11	16
100-846647	14488	11	21	2-127	83259	12	21
100-846648	14488	14	7	2-136	83259	11	15
100-846649	14488	14	8	2-136	83259	12	20
100846512	14488	8	34	2-136	83259	15	11
100846513	14488	7	16	2/10AMDL	75915	6	6
1210OAMP	79405	5	3	2GK54-73	73559	4	30
1125AMP	79405	5	2	212S	82389	4	5
116	84353	11	9	220-000037	52620	4	56
11752	90526	12	28	2382-1	71279	9	12
11752	90526	13	16	240-000017	52620	6	3
11755	90526	13	24	250-000058	14488	4	44
11761	90526	13	25	250-10-30-170	71785	4	18
120-111411	14488	15	10	250-22-30-170	71785	4	19
120-245050	52620	12	5	26-4100-16P	74868	4	21
120-245050	52620	15	4	260-000003	14488	14	9
120-245230	52620	12	2	26016	98376	1	3
120-245640	52620	12	1	26387	98376	9	1
120-245820	52620	12	27	2762	84353	11	19
120-312500	14488	15	1	2911	71855	14	26
120-312510	14488	15	5	3068P1204	80294	8	25
120-312511	52620	15	3	316	84353	11	12
120-312512	52620	15	2	327	08806	4	4
120-845160	12705	11	17	527	08806	13	b
120-845250	14488	10	10	344250	75915	5	9
120-846113	52620	12	9	385-521	15598	10	7
120-846119	52620	12	10	3873	11537	6	14
120-846121	12705	11	18	5GAD500	56289	8	16
120-846121	52620	12	12	5000-1	90526	13	15
120-846125	52620	12	26	505-120	79963	4	23
120-846127	52620	11	6	5240	74545	5	1
120-846127	52620	12	23	5335	21672	14	10
120-846128	14488	12	7	551-004062	14488	12	30
120-846129	14488	12	6	551-004602	14488	13	14
120-846131	14488	12	25	663UW1OPCT	22096	8	8
120-846139	14488	12	16	663UW1OPERCENT	22096	7	2
120-846140	52620	12	14	70-5-26	49956	5	6
120-846144	52620	12	15	706-2162	01364	4	9
120-846309	14488	9	11	723000009	14655	7	15
120-846310	14488	10	9	7264A	71218	2	6
120-846311	52620	13	1	7264A	71218	9	14
120-846312	14488	10	2	730-000181	14488	6	16
				735-000111	14488	11	4

NATIONAL STOCK NUMBER INDEX AND PART NUMBER INDEX

PART NUMBER	FSCM	FIG. NO.	ITEM NO.	PART NUMBER	FSCM	FIG. NO.	ITEM NO.
744-002004	14488	4	51	856-SWM	08717	13	
749000052	14488	8	6	856SG-M	08717	4	
760-000186	14488	3	2	857-A-NE2-100K	08717	4	
760-000204	14488	4	34	857-R-NE2-100K	08717	4	2
760-000205	52620	4	33	8704	83330	14	5
760-002001	52620	5	8	8706	83330	4	22
765-000104	14488	11	5	88-8	74868	4	5'
773-000123	14488	4	53	88ADHPX-1	94694	4	f
807	05704	4	14	964	84353	11	
8466	70903	11	26	97-43	84353	11	

LATEST NATIONAL STOCK NUMBER ASSIGNMENTS

STOCK NUMBER	FIG.	ITEM	STOCK NUMBER	FIG.	ITEM
5305-00-054-5636	13	2	6635-00-127-9569	1	2
5305-00-054-5642	4	12	6635-00-127-9570	1	1
5305-00-054-5642	10	8	5935-00-127-9574	12	5
5305-00-054-5642	13	18	5935-00-127-9574	15	4
5305-00-054-5642	14	4	6635-00-148-9391	12	11
5305-00-054-5651	4	17	5920-00-184-1437	11	8
5305-00-054-5653	5	7	5935-00-193-0179	15	13
5305-00-054-6649	9	6	5365-00-216-1023	14	5
5305-00-054-6650	4	20	5355-00-218-6441	13	11
5305-00-054-6650	12	19	5950-00-220-6700	4	52
5305-00-054-6680	6	10	5945-00-220-6701	4	53
5305-00-059-3655	15	18	5935-00-222-7687	15	12
5305-00-059-3660	2	10	5950-00-222-7688	4	29
5305-00-059-3660	9	19	5305-00-224-1101	10	7
5305-00-059-3662	2	7	5325-00-224-1277	4	33
5305-00-059-3662	9	13	5305-00-227-1620	12	24
5305-00-071-1322	4	13	5305-00-227-1633	4	56
5305-00-071-1322	6	2	5305-00-231-0642	9	16
5305-00-071-1322	9	7	5120-00-240-5292	11	10
5310-00-080-6004	15	15	5120-00-240-5300	11	12
6635-00-081-2248	11	6	5935-00-258-5811	4	21
6635-00-081-2266	12	8	6685-00-279-2893	13	1
6635-00-081-2367	12	15	5310-00-304-8884	6	3
6635-00-081-2532	12	4	5120-00-347-2376	11	9
6635-00-081-2562	15	3	4310-00-433-3005	13	10
6635-00-081-2936	12	27	5310-00-481-4484	14	1r
6635-00-081-2938	11	17	5310-00-550-3715	6	
6635-00-081-2948	15	2	5310-00-616-3555	4	4
6635-00-081-2949	12	14	5930-00-655-1582	4	7
6635-00-081-2953	11	7	5910-00-666-7565	8	3
6635-00-081-2953	12	23	5305-00-763-7822	4	49
6635-00-081-2956	12	26	5303-00-763-7822	6	15
6635-00-081-2991	12	10	5305-00-764-0068	6	18
6635-00-081-3005	11	18	5305-00-765-4257	4	26
6635-00-081-3005	12	12	5305-00-765-4257	9	8
6635-00-081-3006	12	9	5305-00-770-2579	4	24
5961-00-082-3988	8	24	5120-00-889-2163	11	11
6635-00-092-4357	11	22	5961-00-892-0734	7	7
6635-00-092-4359	10	6	5961-00-892-0734	8	11
6635-00-092-4361	13	22	5905-00-900-0175	8	25
6635-00-092-4362	3	3	5310-00-934-9748	4	15
6635-00-092-4363	3	1	5310-00-934-9748	6	7
5905-00-095-2669	12	1	5310-00-934-9759	4	25
5905-00-095-2670	12	2	5310-00-934-9761	4	42
5935-00-095-3327	15	9	5310-00-934-9761	10	12
5935-00-097-0072	9	5	5310-00-934-9761	14	2
5950-00-097-0083	9	2	5305-00-934-9765	9	17
6680-00-099-5840	3	4	5330-00-962-3570	11	16
5905-00-106-9344	7	10	5330-00-962-3570	12	21
5905-00-106-9344	8	26	5961-00-985-9073	8	12
5305-00-988-7603	10	3			

LATEST PART NUMBER ASSIGNMENTS

PART NUMBER	FSCM	FIG. NO.	ITEM NO.	PART NUMBER	FSCM	FIG. NO.	ITEM NO.
JAN1N483B	81349	7	7	MS35649-264	96906	4	42
JAN1N483B	81349	8	11	MS35649-264	96906	10	12
MDL2-10	71400	11	8	MS35649-264	96906	14	2
MS15795-214	96906	15	15	MS35649-284	96906	4	25
MS16995-27	96906	10	3	MS35650-304	96906	9	17
MS35059-23	96906	4	7	MS51957-8	96906	4	1
MS35233-2	96906	13	2	MS51957-8	96906	10	
MS35649-244	96906	4	15	MS51957-8	96906	13	18
MS35649-244	96906	6	7	MS51957-8	96906	14	4

LATEST PART NUMBER ASSIGNMENTS - Continued.

PART NUMBER	FSCM	FIG. NO.	ITEM NO.	PART NUMBER	FSCM	FIG. NO.	ITEM NO.
MS51957-16	96906	4	17	MS51959-43	96906	4	26
MS51957-19	96906	5	7	MS51959-43	96906	9	8
MS51957-25	96906	9	6	MS51959-45	96906	6	18
MS51957-26	96906	4	20	MS51960-65	96906	4	13
MS51957-26	96906	12	19	MS51960-65	96906	6	2
MS51957-53	96906	6	10	MS51960-65	96906	9	7
MS51958-59	96906	15	18	M60002-105-125-6	78553	13	11
MS51958-64	96906	2	10	RCR20G101JS	81349	7	10
MS51958-64	96906	9	19	RCR20G101JS	81349	8	26
MS51958-66	9690,6	2	7	1N3254	81349	8	24
MS51958-66	96906	9	13	2N3053	81349	8	12
MS51959-14	96906	4	49	7717-5	13103	7	5
MS51959-14	96906	6	15	7717-5	13103	8	10

☆U.S. GOVERNMENT PRINTING OFFICE: 1977- 703-025:344

By Order of the Secretary of the Army:

Official:

J.C. PENNINGTON
Brigadier General, United States Army
The Adjutant General

BERNARD W. ROGERS
General, United States Army
Chief of Staff

Distribution:

Active Army:

TSG (1)
WRAMC (1)
DARCOM (1)
TRADOC (2)
TECOM (1)
LBAD (5)
SAAD (5)
TOAD (5)
HISA (33)

NG: None

USAR: None

For explanation of abbreviations, used see AR 310-50.

RECOMMENDED CHANGES TO EQUIPMENT TECHNICAL PUBLICATIONS



THEN... JOT DOWN THE DOPE ABOUT IT ON THIS FORM, CAREFULLY TEAR IT OUT, FOLD IT AND DROP IT IN THE MAIL!

SOMETHING WRONG WITH THIS PUBLICATION?

FROM: (PRINT YOUR UNIT'S COMPLETE ADDRESS)

DATE SENT

PUBLICATION NUMBER

PUBLICATION DATE

PUBLICATION TITLE

BE EXACT... PIN-POINT WHERE IT IS

PAGE NO.

PARA-GRAPH

FIGURE NO.

TABLE NO.

IN THIS SPACE TELL WHAT IS WRONG AND WHAT SHOULD BE DONE ABOUT IT:

TEAR ALONG PERFORATED LINE

PRINTED NAME, GRADE OR TITLE, AND TELEPHONE NUMBER

SIGN HERE:

DA FORM 2028-2
1 JUL 79

PREVIOUS EDITIONS ARE OBSOLETE.

P.S.—IF YOUR OUTFIT WANTS TO KNOW ABOUT YOUR RECOMMENDATION MAKE A CARBON COPY OF THIS AND GIVE IT TO YOUR HEADQUARTERS.

PIN : 009831-000